

“O‘zbekneftgaz” AJ  
 “Shurtan gaz kimyo majmuasi” MCHJ  
 MTRB xizmati  
**RO‘YXATGA OLINDI**  
 0741 004-3432  
 2023 yil “12” 08

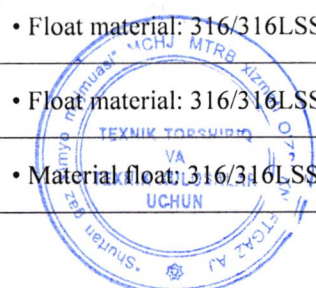
«УТВЕРЖДАЮ»  
 Главный метролог  
 ООО «Шуртанского ГХК»  
 Х. А. Махмудов  
 2023 г.

<p><b>ТЕХНИК TOPSHIRIQ</b>                  “ShGKM” MChJ ehtiyojlariga Sath ajratkichlari uchun qo‘shib ajratish mexanizmlari va qalqovichlar (buyok) xarid qilish</p>	<p><b>ТЕХНИЧЕСКОЕ ЗАДАНИЕ</b>                  на закупку Механизмов переключения и поплавков (Буёк) для переключателей уровня для нужд ООО «Шуртанский ГХК»</p>	<p><b>TECHNICAL ASSIGNMENT</b>                  for the purchase of Switching Mechanisms and Floats(Displacer) for level switches for the needs of LLC “SGCC”</p>
<p><b>1. UMUMIY MA'LUMOTLAR</b></p>	<p><b>1. ОБЩИЕ СВЕДЕНИЯ</b></p>	<p><b>1. GENERAL INFORMATION</b></p>
<p><b>1.1 Nomlanishi</b></p>	<p><b>1.1 Наименование</b></p>	<p><b>1.1 Name</b></p>
<p>Sath ajratkichlari uchun qo‘shib ajratish mexanizmlari va qalqovichlar (buyok).</p>	<p>Механизмы переключения и поплавки (Буёк) для переключателей уровня</p>	<p>Switching Mechanisms and Floats(Displacer) for level switches.</p>
<p><b>1.2 Xarid qiliash uchun asos</b></p>	<p><b>1.2 Основание приобретения товара</b></p>	<p><b>1.2 Basis of goods purchasing.</b></p>
<p>Asos: 06.09.2022 y. 007/17617 raqamli xizmat xati va 2024 yillik buyurtma jamlanmasi 1263,1264,1271 poz</p>	<p>Основание: Служебное письмо № 007/17617 от 06.09.2022г. Годовая свод 2024 поз 1263,1264,1271</p>	<p>Basis: Official Letter No. 007/17617 dated 06.09.2022 and Annual summary for 2024 pos 1263,1264,1271</p>
<p><b>1.3 Yangiligi to'g'risidagi ma'lumot (ishlab chiqarilgan yili)</b></p>	<p><b>1.3 Сведения о новизне (год производства товара)</b></p>	<p><b>1.3 Information about novelty (year of production of goods)</b></p>
<p>Yetkazib berilgan mahsulotlar etkazib berish yilida yoki undan oldingi yilda ishlab chiqarilishi va yangi, ilgari ishlatilmagan bo'lishi kerak.</p>	<p>Поставляемая продукция должна быть произведена в год поставки или в предшествующий ему год и должна быть новой, ранее не использованной.</p>	<p>The supplied products must be manufactured in the year of delivery or the year preceding it and must be new, not previously used.</p>
<p><b>1.4 Tovar ishlab chiqaruvchisi TI FTN (Tashqi iqtisodiy faoliyatning tovar nomenklaturasi) kodini yoki boshqa xalqaro kodlarni taqdim etishi shart.</b></p>	<p><b>1.4 Код ТН ВЭД и другие международные коды при применимости</b></p>	<p><b>1.4 HS code and other international codes when applicable.</b></p>
<p>Tovar ishlab chiqaruvchisi TIF TN kodini yoki boshqa xalqaro kodlarni taqdim etishi shart.</p>	<p>Изготовитель товара должен предоставить код ТН ВЭД или другие международные коды.</p>	<p>The manufacturer of the goods shall provide the HS code or other international codes.</p>
<p><b>2. QO'LLANISH SOHASI</b></p>	<p><b>2. ОБЛАСТЬ ПРИМЕНЕНИЯ</b></p>	<p><b>2. SCOPE OF USE</b></p>
<p>Qo‘shib ajratish mexanizmlari sanoat sharoitlarida foydalanish uchun mo‘ljallangan.</p>	<p>Переключающие механизмы предназначены для использования в суровых промышленных условиях.</p>	<p>Switching mechanisms are designed for use in punishing industrial conditions.</p>
<p><b>3. QO'LLANILADIGAN ATROF MUHID</b></p>	<p><b>3. УСЛОВИЯ ЭКСПЛУАТАЦИИ</b></p>	<p><b>3. OPERATING CONDITIONS</b></p>
<p>- havoning nisbiy namligi 95% dan oshmasligi kerak;                  - atmosfera bosimi 96 dan 106,7 kPa gacha;                  - atrof-muhit harorati -27 dan +65 ° C gacha</p>	<p>- относительная влажность воздуха не более 95 %;                  - атмосферное давление от 96 до 106,7 кПа;                  - температура окружающей среды от -27 до +65°С</p>	<p>- relative air humidity: not more than 95 %;                  - atmospheric pressure: from 96 to 106.7 kPa;                  - ambient temperature: from -27 to +65°С</p>
<p><b>4. TEXNIK TALABLAR</b></p>	<p><b>4. ТЕХНИЧЕСКИЕ ТРЕБОВАНИЯ</b></p>	<p><b>4. TECHNICAL REQUIREMENTS</b></p>

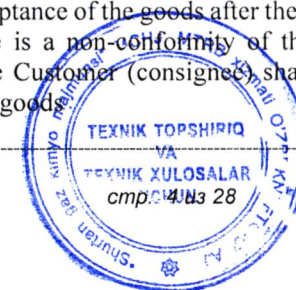
<p>Texnik va tijorat taklifida Yetkazib beruvchi tovar belgisini, modelini, ishlab chiqaruvchining nomlarini ko'rsatishi va tovarning to'liq texnik tavsiflari va chizmalari ko'rsatilgan texnik pasportni taqdim etishi shart. Agar ushbu talab bajarilmasa, Buyurtmachi taklifning texnik qismini ko'rib chiqishni rad etishga yoki tovarning mijozning talablariga muvofiq emasligi to'g'risida xulosa chiqarishga haqli.</p>	<p>В технико-коммерческом предложении поставщик должен указать марку, модель и названия производителя и предоставить технический паспорт с полными техническими характеристиками и чертежами товара. При неисполнении данного требования, Заказчик имеет право отказаться от рассмотрения технической части предложения или выдать заключение о несоответствии товара требованиям заказчика.</p>	<p>In the technical-commercial proposal, the supplier must indicate the brand, model, manufacturer's names and provide a technical passport with full technical characteristics and drawings of the goods. If this requirement is not met, the Customer has the right to refuse to consider the technical part of the proposal or issue a conclusion on the non-compliance of the goods with the customer's requirements.</p>
--	--	---

4.1 Asosiy texnik talablar				4.1 Основные технические требования				4.1 Basic technical requirements			
Mahsulot nomi	Qisqacha xususiyatlar va qushmcha jihozlar	O'l. Bir.	Miq-dori	Название продукта	Краткая характеристика и комплектация оборудования	Ед. изм.	Кол-во	Name of product	Brief description and complete set of equipment	Unit	Qty
Qo'shib ajratish mexanizmi	<ul style="list-style-type: none"> <li>• Yuqori harorat Mini Germet</li> <li>• Quvvat: 110-130VAC 15A</li> <li>• Ishlash harorati -15°F (-26°C) 400°F (204°C)</li> <li>• Atrof-muhit harorati: -28°C dan 65°C gacha</li> <li>• Nisbiy namlik: 100%</li> <li>• Himoya sinfi: Eexd IIC T6</li> </ul>	dona	11	Механизм переключения	<ul style="list-style-type: none"> <li>• Высокая температура</li> <li>Мини-Гермет</li> <li>• Питания: 110-130VAC 15A</li> <li>• Рабочая температура-15°F (-26°C) 400°F (204°C)</li> <li>• Температура окружающие среда: -28°C до 65°C</li> <li>• Относительная влажность: 100%</li> <li>• Класс защита: Eexd IIC T6</li> </ul>	шт.	11	Switching Mechanism	<ul style="list-style-type: none"> <li>• High-Temperature Mini Germet</li> <li>• Power supply: 110-130VAC 15A</li> <li>• Operating temperature -15°F (-26°C) 400°F (204°C)</li> <li>• Ambient temperature: -28°C to 65°C</li> <li>• Relative humidity: 100%</li> <li>• Protection class: Eexd IIC T6</li> </ul>	pcs.	11
Qo'shib ajratish mexanizmi	<ul style="list-style-type: none"> <li>• Oltin aloqa Mini Germet</li> <li>• Quvvat: 110-130VAC 15A</li> <li>• Ishlash harorati -15°F (-26°C) 250°F (121°C)</li> <li>• Atrof-muhit harorati: -28°C dan 65°C gacha</li> <li>• Nisbiy namlik: 100%</li> <li>• Himoya sinfi: Eexd IIC T6</li> </ul>	dona	25	Механизм переключения	<ul style="list-style-type: none"> <li>• Золотой контакт Мини-Гермет</li> <li>• Питания: 110-130VAC 15A</li> <li>• Рабочая температура-15°F (-26°C) 250°F (121°C)</li> <li>• Температура окружающие среда: -28°C до 65°C</li> <li>• Относительная влажность: 100%</li> <li>• Класс защита: Eexd IIC T6</li> </ul>	шт.	25	Switching Mechanism	<ul style="list-style-type: none"> <li>• Golden contact Mini Germet</li> <li>• Power supply: 110-130VAC 15A</li> <li>• Operating temperature -15°F (-26°C) 250°F (121°C)</li> <li>• Ambient temperature: -28°C to 65°C</li> <li>• Relative humidity: 100%</li> <li>• Protection class: Eexd IIC T6</li> </ul>	pcs.	25
Qo'shib ajratish mexanizmi	<ul style="list-style-type: none"> <li>• Oltin aloqa germetik muhrlangan</li> <li>• Quvvat: 110-130VAC 15A</li> <li>• Ishlash harorati -65°F (-54°C) 250°F (121°C)</li> <li>• Atrof-muhit harorati: -28°C dan 65°C gacha</li> </ul>	dona	11	Механизм переключения	<ul style="list-style-type: none"> <li>• Золотой контакт Герметично запечатан</li> <li>• Питания: 110-130VAC 15A</li> <li>• Рабочая температура -65°F (-54°C) 250°F (121°C)</li> </ul>	шт.	11	Switching Mechanism	<ul style="list-style-type: none"> <li>• Golden contact Hermetically Sealed</li> <li>• Power supply: 110-130VAC 15A</li> <li>• Operating temperature -15°F (-26°C) 250°F (121°C)</li> </ul>	pcs.	11

	<ul style="list-style-type: none"> <li>• Nisbiy namlik: 100%</li> <li>• Himoya sinfi: Eexd IIC T6</li> </ul>				<ul style="list-style-type: none"> <li>• Температура окружающие среда: -28°C до 65°C</li> <li>• Относительная влажность: 100%</li> <li>• Класс защита: Eexd IIC T6</li> </ul>				<ul style="list-style-type: none"> <li>• Ambient temperature: -28°C to 65°C</li> <li>• Relative humidity: 100%</li> <li>• Protection class: Eexd IIC T6</li> </ul>		
Qo'shib ajratish mexanizmi	<ul style="list-style-type: none"> <li>• Yuqori harorat germetik muhrlangan</li> <li>• Quvvat: 110-130VAC 15A</li> <li>• Ishlash harorati 15°F (-26°C) 400°F (204°C)</li> <li>• Atrof-muhit harorati: -28°C dan 65°C gacha</li> <li>• Nisbiy namlik: 100%</li> <li>• Himoya sinfi: Eexd IIC T6</li> </ul>	dona	4	Механизм переключения	<ul style="list-style-type: none"> <li>• Высокая температура Герметично запечатан</li> <li>• Питания: 110-130VAC 15A</li> <li>• Рабочая температура 15°F (-26°C) 400°F (204°C)</li> <li>• Температура окружающие среда: -28°C до 65°C</li> <li>• Относительная влажность: 100%</li> <li>• Класс защита: Eexd IIC T6</li> </ul>	шт.	4	Switching Mechanism	<ul style="list-style-type: none"> <li>• High-Temperature Hermetically Sealed</li> <li>• Power supply: 110-130VAC 15A</li> <li>• Operating temperature -15°F (-26°C) 400°F (204°C)</li> <li>• Ambient temperature: -28°C to 65°C</li> <li>• Relative humidity: 100%</li> <li>• Protection class: Eexd IIC T6</li> </ul>	pcs.	4
Qalqovich (Buyok)	• Qalqovich materiali: 316/316LSS	dona	6	Поплавок (Буёк)	• Поплавок материал: 316/316LSS	шт	6	Float (displacer)	• Float material: 316/316LSS	Pcs	6
Qalqovich (Buyok)	• Qalqovich materiali: 316/316LSS	dona	17	Поплавок (Буёк)	• Поплавок материал: 316/316LSS	шт	17	Float (displacer)	• Float material: 316/316LSS	Pcs	17
Qalqovich (Buyok)	• Qalqovich materiali: 316/316LSS	dona	3	Поплавок (Буёк)	• Поплавок материал: 316/316LSS	шт	3	Float (displacer)	• Float material: 316/316LSS	Pcs	3
Qalqovich (Buyok)	• Qalqovich materiali: 316/316LSS	dona	8	Поплавок (Буёк)	• Поплавок материал: 316/316LSS	шт	8	Float (displacer)	• Float material: 316/316LSS	Pcs	8
Qalqovich (Buyok)	• Qalqovich materiali: 316/316LSS	dona	6	Поплавок (Буёк)	• Поплавок материал: 316/316LSS	шт	6	Float (displacer)	• Float material: 316/316LSS	Pcs	8
Qalqovich (Buyok)	• Qalqovich materiali: 316/316LSS	dona	3	Поплавок (Буёк)	• Поплавок материал: 316/316LSS	шт	3	Float (displacer)	• Float material: 316/316LSS	Pcs	3
Qalqovich (Buyok)	• Qalqovich materiali: 316/316LSS	dona	1	Поплавок (Буёк)	• Поплавок материал: 316/316LSS	шт	1	Float (displacer)	• Displacer material: 316/316LSS	Pcs	1
Qalqovich (Buyok)	• Qalqovich materiali: 316/316LSS	dona	3	Поплавок (Буёк)	• Поплавок материал: 316/316LSS	шт	3	Float (displacer)	• Float material: 316/316LSS	Pcs	3
Qalqovich (Buyok)	• Qalqovich materiali: 316/316LSS	dona	1	Поплавок (Буёк)	• Поплавок материал: 316/316LSS	шт	1	Float (displacer)	• Float material: 316/316LSS	Pcs	1
Qalqovich (Buyok)	• Qalqovich materiali: 316/316LSS	dona	3	Поплавок (Буёк)	• Поплавок материала: 316/316LSS	шт	3	Float (displacer)	• Material float: 316/316LSS	Pcs	3



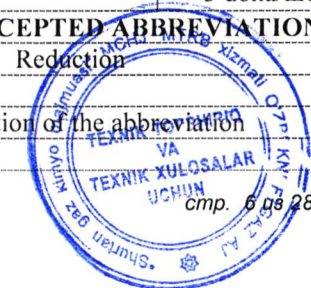
<p><b>4.2 Atrof-muhit omillari ta'sirida ishonchlilik va parametrlarga qo'yiladigan talablar</b></p>	<p><b>4.2 Требования по надежности и параметрам при воздействии факторов внешней среды</b></p>	<p><b>4.2 Requirements for reliability and parameters under the influence of environmental factors</b></p>
<p>Atrof-muhit sharoitida ishlaganda o'zgarasligi kerak: harorat -27 dan +65 °C gacha, namlik 10% dan 95% gacha</p>	<p>Не должны изменяться, при работе в условиях окружающей среды: температура от -27 до +65°C, влажность от 10% до 95%</p>	<p>Should not change when working in ambient conditions: temperature from -27 to + 65 °C, humidity from 10% to 95%</p>
<p><b>5. YETKAZIB BERISH VA QABUL QILISH QOIDALARIGA QO'YILGAN TALABLAR</b></p>	<p><b>5. ТРЕБОВАНИЯ ПО ПРАВИЛАМ СДАЧИ И ПРИЕМКИ</b></p>	<p><b>5. REQUIREMENTS AS PER DELIVERY AND ACCEPTANCE RULES</b></p>
<p><b>5.1 Yetkazib berish va qabul qilish tartibi</b></p>	<p><b>5.1 Порядок сдачи и приемки</b></p>	<p><b>5.1 Delivery and Acceptance Procedure.</b></p>
<p>Tovarlar kiruvchi nazoratdan o'tkazilgandan keyin va shartnomaga muvofiq dalolatnoma tuzilgandan keyin qabul qilinishi kerak. Buyurtmachi tovarni miqdori, sifati va partiyaning to'liqligi, shuningdek tovar xavfsizligining tashqi belgilari (mexanik shikastlanishlar, tovarning alohida birliklari va qismlarining ko'rinadigan deformatsiyasi va shunga o'xshash shikastlanishning boshqa aniq belgilari) bo'yicha hamda transport va qo'shimcha hujjatlarga, ishlab chiqaruvchining sifat sertifikatlariga muvofiq qabul qiladi. Shu bilan, tomonlar xaridorning vakili tomonidan amalga oshirilgan tovarlarni vizual tekshirish, uni tashish paytida tovarlarning miqdori, to'liqligi va tashqi belgilari bo'yicha muvofiqligini aniqlash uchun mutlaq va yakuniy bo'lishi kerakligiga rozi bo'ladi. Mahsulotlar o'rnatish, ishga tushirish va ishlatish uchun hujjatlar bilan birga e'lon qilingan xususiyatlarni tasdiqlovchi muvofiqlik sertifikatlari va sertifikatlash sinovlari hisobotlariga ega bo'lishi kerak. Barcha qo'shimcha hujjatlar rus va ingliz tillarida tuzilib, etkazib berilgan mahsulotlar bilan birga Buyurtmachiga topshirilishi kerak. Belgilash rus va ingliz tillarida bo'lishi va aniq belgilarga ega bo'lishi kerak. Ishlab chiqaruvchi, partiya raqami va ishlab chiqarilgan sanasi ham ko'rsatilgan bo'lishi kerak. Belgilash etkazib beriladigan tovarlarning butun xizmat muddati davomida saqlanishi kerak. Buyurtmachi (oluvchi) yukni tashuvchidan qabul qilgandan so'ng, tovarlarning shartnomada, texnik shartlarda yoki unga qo'shimcha kelishuvlarda, shuningdek transportda, qo'shimcha hujjatlarda, ishlab chiqaruvchining sifat sertifikatlarida ko'rsatilgan ma'lumotlarga muvofiqligini tekshirishi shart. Agar tovar tashuvchidan olinganidan keyin qabul qilinganda sifati/miqdori bo'yicha tovarlarning nomuvofiqligi aniqlansa, Buyurtmachi (oluvchi) tovarni qabul qilishni to'xtatib turadi.</p>	<p>Товар должен приниматься после входного контроля и составления акта в соответствии с договором. Заказчик производит приемку товара по количеству, качеству и комплектности партии, и внешним признакам сохранности товара (наличие механических повреждений, видимая деформация отдельных узлов и деталей товара и иные подобные явные признаки повреждений) в соответствии с транспортными и сопроводительными документами, сертификатами качества завода-изготовителя. Настоящим, стороны договариваются, что визуальный осмотр товара, произведенный представителем Заказчика, должен быть абсолютным и окончательным для сторон для определения соответствия по количеству, комплектности и внешним признакам сохранности товара при его транспортировке. Продукция должна иметь сертификаты соответствия и протоколы сертификационных испытаний, подтверждающие заявленные характеристики, сопровождаться документацией по монтажу, наладке и эксплуатации. Вся сопроводительная документация должна быть составлена на русском и английском языках и передана Заказчику вместе с поставляемой продукцией. Маркировка должна выполняться на русском и английском языках, и иметь четкие обозначения. Также указывается изготовитель, номер партии и дата изготовления. Маркировка должна сохраняться на весь срок службы поставляемого оборудования. При приемке товара от перевозчика, Заказчик (грузополучатель) обязан проверить соответствие товара сведениям, указанным в договоре, спецификациях или дополнительных соглашениях к нему, а также в транспортных, сопроводительных документах, сертификатах качества завода-изготовителя. В случае, если при приемке товара после его получения от перевозчика</p>	<p>The goods shall be accepted after incoming control and drawing up an act in accordance with the contract. The Customer accepts the goods according to the quantity, quality and completeness of the batch, and external signs of preservation of the goods (presence of mechanical damages, visible deformation of individual units and parts of the goods and other similar obvious signs of damage) in accordance with transport and accompanying documents, quality certificates of the manufacturer. Hereby, the parties agree that the visual inspection of the goods performed by the representative of the Customer shall be absolute and final for the parties to determine compliance by quantity, completeness and external signs of preservation of the goods during its transportation. The products shall have certificates of conformity and certification test reports confirming the declared characteristics, accompanied with installation, adjustment and operation documentation. All accompanying documentation shall be in Russian and English and shall be provided to the Customer together with the products supplied. The manufacturer, batch number and date of manufacture are also indicated. Marking shall be maintained for the entire service life of the supplied goods. Upon acceptance of the goods from the carrier, the Customer (consignee) shall check the conformity of the goods with the information specified in the contract, specifications or additional agreements to it, as well as in transport, accompanying documents, quality certificates of the manufacturer. If upon acceptance of the goods after their receipt from the carrier there is a non-conformity of the goods by quality/quantity, the Customer (consignee) shall suspend the acceptance of the goods.</p>









	будет выявлено несоответствие товара по качеству/количеству, Заказчик (грузополучатель) обязан приостановить приемку.	
<b>5.2 Texnik va boshqa hujjatlarni buyurtmachiga topshirishga qo'yiladigan talablar.</b>	<b>5.2 Требования по передаче заказчику технических и иных документов.</b>	<b>5.2 Requirements for handing-over the technical and other documents to the customer.</b>
<p>Yetkazib beruvchi mahsulotning belgilangan talablarga muvofiqligini tasdiqlovchi quyidagi hujjatlarni taqdim etishi shart:</p> <ul style="list-style-type: none"> <li>-GOST va xavfsizlik talablariga muvofiqligi to'g'risidagi sertifikatlar (deklaratsiyalar);</li> <li>- ishlab chiqaruvchilarni ko'rsatgan holda uskunaning asosiy tarkibiy qismlarining spetsifikatsiyasi, shuningdek ularga muvofiqlik sertifikatlarini ilova qilish;</li> <li>-Rus va ingliz tillarida o'rnatish, ishga tushirish va foydalanish uchun hujjatlar; Barcha etkazib beriladigan asbob-uskunalar kirish nazoratidan o'tkaziladi, jihozlar omborga kelib tushgandan so'ng ishtirokchi vakili.</li> </ul> <p>Mahsulotga quyidagi hujjatlar ilova qilinishi kerak:</p> <ul style="list-style-type: none"> <li>- tovarning muvofiqlik sertifikatini taqdim etish zarur;</li> <li>- miqdori, tovar birligi narxi va umumiy summasi ko'rsatilgan tovar tavsifi bilan sotuvchining schyot-fakturasi (schyot-fakturasi);</li> <li>- qabul qiluvchining nomiga berilgan jo'natma qog'ozi, Buyurtmachining nomi, amaldagi shartnomaning raqami va imzolangan sanasi;</li> <li>- hisobvaraqa-fakturaning raqami va sanasi ko'rsatilgan tovarning kelib chiqishi to'g'risidagi sertifikat;</li> <li>- qadoqlash varaqasi, ishlab chiqaruvchi tomonidan berilgan tovarlarning sifat sertifikati, tovarning xavfsizlik ma'lumotlar varag'i.</li> </ul>	<p>Поставщик обязан предоставить следующие документы, подтверждающие соответствие продукции установленным требованиям:</p> <ul style="list-style-type: none"> <li>-Сертификаты (декларации) соответствия требованиям ГОСТ и безопасности;</li> <li>-Спецификация основных комплектующих оборудования с указанием производителей, а также приложением сертификатов соответствия на них;</li> <li>-Документация по монтажу, наладке и эксплуатации на русском и английском языках; Все поставляемое оборудование проходит входной контроль, с представителем участника при получении оборудования на склад.</li> </ul> <p>Товар должен сопровождаться следующей документацией:</p> <ul style="list-style-type: none"> <li>-необходимо предоставить сертификат соответствия товара;</li> <li>- счёт-фактура (инвойс) Продавца с описанием товара, указанием количества, цены единицы товара и общей суммы;</li> <li>- транспортная накладная, выпущенная на имя грузополучателя, наименование Заказчика, номер и даты подписания действующего контракта;</li> <li>- сертификат о происхождении страны товара с указанием номера и даты инвойса;</li> <li>- упаковочный лист, сертификат о качестве товара, выписанного производителем, паспорт безопасности товара.</li> </ul>	<p>The Supplier shall provide the following documents confirming compliance of the products with the established requirements:</p> <ul style="list-style-type: none"> <li>- Certificates (declarations) of compliance with GOST and safety requirements;</li> <li>-Specification of main components of equipment with indication of manufacturers, as well as application of certificates of conformity for them;</li> <li>-Documentation for installation, adjustment and operation in Russian and English; All supplied equipment is subject to incoming inspection with the participant's representative when receiving the equipment at the warehouse.</li> </ul> <p>The goods shall be accompanied with the following documentation:</p> <ul style="list-style-type: none"> <li>- the certificate of conformity of the goods;</li> <li>- invoice (invoice) of the Seller with description of the goods, indication of the quantity, price of the unit of goods and total amount;</li> <li>- consignment note issued in the name of the consignee, the name of the Customer, the number and dates of signing the existing contract;</li> <li>- Certificate of origin of the country of goods indicating the invoice number and date;</li> <li>- packing list, Certificate of quality of goods issued by the manufacturer, product safety passport.</li> </ul>
<b>6. TRANSPORT QILISH TALABLARI</b>	<b>6. ТРЕБОВАНИЯ К ТРАНСПОРТИРОВАНИЮ</b>	<b>6. TRANSPORTATION REQUIREMENTS</b>
Tovarlarni transport vositalarida tashish har bir tovarga tegishli tashish bo'yicha xalqaro standartlar va qoidalarga muvofiq amalga oshirilishi kerak.	Перевозка товаров с помощью транспортных средств должна осуществляться в соответствии с международными стандартами и правилами перевозки каждого товара.	Transportation of goods by means of vehicles must be carried out in accordance with international standards and rules for the transport of each product.
<b>7. KAFOLATLAR HAJMI VA/YOKI MUDDATIGA TALABLAR</b>	<b>7. ТРЕБОВАНИЯ К ОБЪЕМУ И/ИЛИ СРОКУ ПРЕДОСТАВЛЕНИЯ ГАРАНТИЙ</b>	<b>7. REQUIREMENTS FOR THE SCOPE AND/OR PERIOD OF GUARANTEES</b>



Tovarlarni saqlashning kafolat muddati, saqlash talablariga rioya qilgan holda, xaridorga tovar etkazib berilgan kundan boshlab kamida 24 oy bo'lishi kerak.	Гарантийной срок хранения Товара должен составлять не менее 24 месяцев с даты поставки Товара Покупателю, при условии соблюдения требований к хранению	The guaranteed period of storage of the Goods must be at least 24 months from the date of delivery of the Goods to the Buyer, subject to the storage requirements	
<b>8. EKKOLOGIYA VA SANITARIYA TALABLAR</b>	<b>8. ЭКОЛОГИЧЕСКИЕ И САНИТАРНЫЕ ТРЕБОВАНИЯ</b>	<b>8. ENVIRONMENTAL AND SANITARY REQUIREMENTS</b>	
Mahsulot O'zbekiston Respublikasida belgilangan ekologik va sanitariya talablariga javob berishi, gigiyenik sertifikatga ega bo'lishi kerak (agar mahsulot gigiyenik sertifikatlash uchun majburiy bo'lsa).	Товар должен соответствовать экологическим и санитарным требованиям, установленным в республике Узбекистан, и должен иметь гигиенический сертификат (если товар является обязательным к гигиенической сертификации).	The product must comply with the environmental and sanitary requirements established in the Republic of Uzbekistan and must have a hygienic certificate (if the product is mandatory for hygienic certification).	
<b>9. XAVFSIZLIK TALABLARI</b>	<b>9. ТРЕБОВАНИЯ ПО БЕЗОПАСНОСТИ</b>	<b>9. SAFETY REQUIREMENTS</b>	
Mahsulotni ishlatish, saqlash va yo'q qilish paytida xavfsiz bo'lishi kerak.	Товар должно быть безопасным при его эксплуатации, хранения, а также утилизации.	The goods shall be safe during their operation, storage and disposal.	
<b>10. MIQDOR TALABLARI</b>	<b>10. ТРЕБОВАНИЯ К КОЛИЧЕСТВУ</b>	<b>10. REQUIREMENTS FOR QUANTITY</b>	
<b>QUYIDAGILAR YOKI ULARGA TEXNIK JIHATDAN TENG BO'LGAN ANALOGLARI TAKLIF QILINISHI MUMKIN.</b>	<b>МОГУТ БЫТЬ ПРЕДЛОЖЕНЫ СЛЕДУЮЩИЕ ИЛИ ИХ ТЕХНИЧЕСКИ ЭКВИВАЛЕНТНЫЕ АНАЛОГИ.</b>	<b>THE FOLLOWING OR THEIR TECHNICALLY EQUIVALENT ANALOGS CAN BE OFFERED.</b>	
<b>№</b>	<b>Nomlanishi</b>	<b>Наименование МТР</b>	<b>Name of goods</b>
1.	Qo'shib ajratish mexanizmi / Механизм переключения /Switching Mechanism V1		11 dona/шт/pcs
	Qo'shib ajratish mexanizmi / Механизм переключения /Switching Mechanism S1		25 dona/шт/pcs
	Qo'shib ajratish mexanizmi / Механизм переключения /Switching Mechanism G1		11 dona/шт/pcs
	Qo'shib ajratish mexanizmi / Механизм переключения /Switching Mechanism H1		4 dona/шт/pcs
	Qalqovich (Buyok)/ Поплавок (Буёк)/ Float (displacer) Model: 121C-C2D-C-V1-T6		6 dona/шт/pcs
	Qalqovich (Buyok)/ Поплавок (Буёк)/ Float (displacer) Model: 121A-C2D-B-S1-T6		17 dona/шт/pcs
	Qalqovich (Buyok)/ Поплавок (Буёк)/ Float (displacer) Model: 123A-C2D-B-S1-T6		3 dona/шт/pcs
	Qalqovich (Buyok)/ Поплавок (Буёк)/ Float (displacer) Model: 101A-C2D-B-G1-T6		8 dona/шт/pcs
	Qalqovich (Buyok)/ Поплавок (Буёк)/ Float (displacer) Model: 103A-C2D-B-S1-T6		8 dona/шт/pcs
	Qalqovich (Buyok)/ Поплавок (Буёк)/ Float (displacer) Model: 109C-C2D--G1-T6		3 dona/шт/pcs
	Qalqovich (Buyok)/ Поплавок (Буёк)/ Float (displacer) Model: 742A-C2D-B-G1-T6		1 dona/шт/pcs
	Qalqovich (Buyok)/ Поплавок (Буёк)/ Float (displacer) Model: 103C-C2D-C-G1-T6		3 dona/шт/pcs
	Qalqovich (Buyok)/ Поплавок (Буёк)/ Float (displacer) Model: 101C-C2D-C-V1-T6		1 dona/шт/pcs
	Qalqovich (Buyok)/ Поплавок (Буёк)/ Float (displacer) Model: 801A-C2D-C-S1-T6		3 dona/шт/pcs
<b>11. QABUL QILGAN QISQARMALAR RO'YXATI</b>	<b>11. ПЕРЕЧЕНЬ ПРИНЯТЫХ СОКРАЩЕНИЙ</b>	<b>11. LIST OF ACCEPTED ABBREVIATIONS</b>	
<b>№</b>	<b>Qisqartmalar</b>	<b>Сокращение</b>	<b>Reduction</b>
1.			
<b>№</b>	<b>Qisqartmalar ma'nosi</b>	<b>Расшифровка сокращения</b>	<b>Explanation of the abbreviation</b>
1.			



12. ILOVALAR RO'YXATI		12. ПЕРЕЧЕНЬ ПРИЛОЖЕНИЙ	12. ATTACHED APPENDIXES
№	Ilovalar nomi	Наименование приложения	Name of appendixes
1.			
№	Sahifalar soni	Количество страниц	Number of pages
1.			

Tayyorladi / Разработчик / Developed by:		З. Кайнаров Z. Qaynarov
Kelishilgan / Согласовано / Agreed		
Bosh muhandis o'rinbosari-IBX boshlig'i/Заместитель главного инженера-Начальник службы по управлению надежностью/Deputy Chief Engineer-Head of RMS:		Т. Диёров T. Diyorov
Bosh metrolog o'rinbosari / Заместитель главного метролога / Deputy Chief Metrologist:		О. Ачилов O. Achilov
NO'A va A sexi boshlig'i / Начальник цеха КИП и А / Chief of the Instrumentation Department:		З. Жалилов Z. Jalilov
NO'A va A sexi uchastka boshlig'i / Начальник участка цеха КИП и А/Supervising foreman of the Instrumentation Department:		Н. Шодиев N. Shodiyev
MTRB xizmati muhandisi / Инженер СУМТР / Engineer of The Material and technical resource management service:		С. Кадыров S. Kodirov



Installation Dimensions					Options / Tags																									
<p>NOTE: ALL PROCESS FLANGE NIPPLES ARE 1" AS STANDARD</p> <p>NOTE: FLANGE BOLT HOLES STRADDLE CENTER LINE (BOLT HOLES SHOWN ARE REPRESENTATIVE ONLY)</p>					<p>FUNGICIDAL VARNISH OVERSIZED NAMEPLATE FOR CUSTOMER TAGGING SD=400MM CENTERS EC=3/4" NPT VENT W/PLG ET=6" TEMP EXTNSN MILL TEST REPORT 1" 150#RF DRAIN FLG HAWKE CABLE GLAND 501/453/UNIV/O/M20 HI-TEMP GOLD CONTACT SWITCH FACTORY GENERAL APPEARANCE AND DIMENSIONAL INSPCTN REPORT FOR LEVEL CONTROL DEVICES CALIBRATION CERT. LEVEL SWITCH HYDROSTATIC PRESSURE TEST CERTIFICATION Q.A. TEST REPORTS - MECHANICAL LEVEL</p>																									
							<p>TAG NO. LS-11004A SERVICE: BODY:A106CS,TRM:316SS LS-11004A SERVICE: BODY:A106CS,TRM:316SS</p>																							
<table border="1"> <thead> <tr> <th colspan="2">B</th> <th colspan="2">C</th> <th colspan="2">F</th> <th colspan="2">G</th> </tr> <tr> <th>IN</th> <th>MM</th> <th>IN</th> <th>MM</th> <th>IN</th> <th>MM</th> <th>IN</th> <th>MM</th> </tr> </thead> <tbody> <tr> <td>2-1/4</td> <td>57</td> <td>3-7/8</td> <td>98.5</td> <td>6</td> <td>152</td> <td>15-3/4</td> <td>400</td> </tr> </tbody> </table>					B		C		F		G		IN	MM	IN	MM	IN	MM	IN	MM	2-1/4	57	3-7/8	98.5	6	152	15-3/4	400		
B		C		F		G																								
IN	MM	IN	MM	IN	MM	IN	MM																							
2-1/4	57	3-7/8	98.5	6	152	15-3/4	400																							
<p>Customer: <b>ABB LUMMUS GLOBAL, INC.</b></p> <p>Customer P.O. No./Inquiry No. <u>10162=1012</u> SOR Quote/Order No. <u>326132</u> Item _____</p> <p>Model No. <u>121A-C2D-B-V1-T6-VVTTSDCECMRX7</u> Qty <u>2</u></p> <p>Switch Type: <input checked="" type="checkbox"/> HI TEMP MINI HERMET No. switch contacts <u>1</u> <input checked="" type="checkbox"/> SPDT <input type="checkbox"/> DPDT</p> <p>Switch Rating: <u>1</u> amps @ <u>120</u> VAC <input type="checkbox"/> VDC <input type="checkbox"/> Pneumatic 150 psig max. supply</p> <p>Switch Housing: <input type="checkbox"/> NEMA 4 (IP55) <input type="checkbox"/> NEMA 4 &amp; 7 (IP65) Class I, Group B, C, D, Div. 1 &amp; 2 <input checked="" type="checkbox"/> EExd IIC T6 CENELEC/BASEEFA</p> <p><input type="checkbox"/> Min. <input checked="" type="checkbox"/> Oper. <input type="checkbox"/> I/F S.G. <u>0.89</u> Max. Liquid Temp <u>316</u> °F °C Max Press. <u>1966</u> <input type="checkbox"/> psig <input type="checkbox"/> kg/cm<sup>2</sup> <input type="checkbox"/> kPa <input type="checkbox"/> bar</p> <p>Flange Connection Size: <input type="checkbox"/> 1" <input type="checkbox"/> 1-1/2" <input checked="" type="checkbox"/> 2" Rating: <input type="checkbox"/> 150# <input checked="" type="checkbox"/> 300# <input type="checkbox"/> 600# <input type="checkbox"/> <input checked="" type="checkbox"/> RF <input type="checkbox"/> RTJ <input type="checkbox"/> WN</p> <p>Material of Construction: <u>A106B CARBON STEEL</u> <input checked="" type="checkbox"/> Float <input type="checkbox"/> Displacer Material <u>316/316L SS</u></p> <p>Certified by: <u>[Signature]</u> Date <u>3-8-99</u></p> <p>Rel. Drawing No. <u>390-255</u> E.O. No. <u>3651</u> Rev. <u>1</u> Drawn by <u>[Signature]</u> Date <u>05-24-94</u> Approved by <u>[Signature]</u> Date <u>5-24-94</u> Page of _____</p>																														

Installation Dimensions					Options / Tags																									
<p>NOTE: ALL PROCESS FLANGE NIPPLE ARE 1" AS STANDARD</p> <p>NOTE: FLANGE BOLT HOLES STRADDLE CENTER LINE (BOLT HOLES SHOWN ARE REPRESENTATIVE ONLY)</p>					<p>LS-12022A SERVICE: BODY:A106CS,TRIM:316SS LS-12022B SERVICE: BODY:A106CS,TRIM:316SS LS-12022C SERVICE: BODY:A106CS,TRIM:316SS LS-12023 SERVICE: BODY:A106CS,TRIM:316SS</p>																									
							<p>TAG NO. LS-12020A SERVICE: BODY:A106CS,TRM:316SS LS-12020B SERVICE: BODY:A106CS,TRM:316SS LS-12020C SERVICE: BODY:A106CS,TRM:316SS LS-12021A SERVICE: BODY:A106CS,TRM:316SS LS-12021B SERVICE: BODY:A106CS,TRM:316SS 12021C SERVICE: BODY:A106CS,TRM:316SS</p>																							
<table border="1"> <thead> <tr> <th colspan="2">B</th> <th colspan="2">C</th> <th colspan="2">F</th> <th colspan="2">G</th> </tr> <tr> <th>IN</th> <th>MM</th> <th>IN</th> <th>MM</th> <th>IN</th> <th>MM</th> <th>IN</th> <th>MM</th> </tr> </thead> <tbody> <tr> <td>3-3/8</td> <td>85.7</td> <td>4-1/4</td> <td>108</td> <td>6</td> <td>152</td> <td>15-3/4</td> <td>400</td> </tr> </tbody> </table>					B		C		F		G		IN	MM	IN	MM	IN	MM	IN	MM	3-3/8	85.7	4-1/4	108	6	152	15-3/4	400		
B		C		F		G																								
IN	MM	IN	MM	IN	MM	IN	MM																							
3-3/8	85.7	4-1/4	108	6	152	15-3/4	400																							
<p>Customer: <b>ABB LUMMUS GLOBAL, INC.</b></p> <p>Customer P.O. No./Inquiry No. <u>10162-1012</u> SOR Quote/Order No. <u>326132</u> Item _____</p> <p>Model No. <u>121A-C2D-B-S1-T6-VVTTSDCECMRX6</u> Qty <u>13</u></p> <p>Switch Type: <input checked="" type="checkbox"/> GOLD CONTACT MINI HERMET No. switch contacts <u>1</u> <input checked="" type="checkbox"/> SPDT <input type="checkbox"/> DPDT</p> <p>Switch Rating: <u>1</u> amps @ <u>120</u> VAC <input type="checkbox"/> VDC <input type="checkbox"/> Pneumatic 150 psig max. supply</p> <p>Switch Housing: <input type="checkbox"/> NEMA 4 (IP55) <input type="checkbox"/> NEMA 4 &amp; 7 (IP65) Class I, Group B, C, D, Div. 1 &amp; 2 <input checked="" type="checkbox"/> EExd IIC T6 CENELEC/BASEEFA</p> <p><input type="checkbox"/> Min. <input checked="" type="checkbox"/> Oper. <input type="checkbox"/> I/F S.G. <u>993</u> Max. Liquid Temp <u>121</u> °F °C Max Press. <u>1966</u> <input type="checkbox"/> psig <input type="checkbox"/> kg/cm<sup>2</sup> <input type="checkbox"/> kPa <input type="checkbox"/> bar</p> <p>Flange Connection Size: <input type="checkbox"/> 1" <input type="checkbox"/> 1-1/2" <input checked="" type="checkbox"/> 2" Rating: <input type="checkbox"/> 150# <input checked="" type="checkbox"/> 300# <input type="checkbox"/> 600# <input type="checkbox"/> <input checked="" type="checkbox"/> RF <input type="checkbox"/> RTJ <input type="checkbox"/> WN</p> <p>Material of Construction: <u>A106B CARBON STEEL</u> <input checked="" type="checkbox"/> Float <input type="checkbox"/> Displacer Material <u>316/316L SS</u></p> <p>Certified by: <u>[Signature]</u> Date <u>3-8-99</u></p> <p>Rel. Drawing No. <u>390-291</u> E.O. No. <u>3687</u> Rev. <u>1</u> Drawn by <u>[Signature]</u> Date <u>08-01-94</u> Approved by <u>[Signature]</u> Date _____ Page of _____</p>																														





### Installation Dimensions

**Options / Tags**

FUNGICIDAL VARNISH  
OVERSIZED NAMEPLATE  
FOR CUSTOMER TAGGING  
SD=400MM CENTERS  
EC=3/4"NPT VENT W/PLG  
MILL TEST REPORT  
FACTORY GENERAL  
APPEARANCE AND  
DIMENSIONAL INSPCTN  
REPORT FOR LEVEL  
CONTROL DEVICES  
CALIBRATION CERT.  
LEVEL SWITCH  
HYDROSTATIC PRESSURE  
TEST CERTIFICATION  
Q.A. TEST REPORTS -  
MECHANICAL LEVEL  
1" 300# RF DRAIN FLG  
HAWKE CABLE CLAND  
501/453/UNIV/O/M20

TAG NO:  
LS-12018A  
SERVICE:  
BODY:A106CS,TRM:316SS  
LS-12018B  
SERVICE:  
BODY:A106CS,TRM:316SS  
LS-12018C  
SERVICE:  
BODY:A106CS,TRM:316SS

B		C		F		G	
IN	MM	IN	MM	IN	MM	IN	MM
3	76	3-3/4	95	6-1/2	165	15-3/4	400

(Not for construction unless certified.)

---

Customer: ABB LIMMUS GLOBAL, INC

Customer P.O. No./Inquiry No. 10162-1012 SOR Quote/Order No. 326132 Item \_\_\_\_\_ Qty 3

Model No. 123A-C2D-B-S1-T6-VVTTSDCEMRX6

Switch Type:  GOLD CONTACT MINI HERMET No. switch contacts 1  SPDT  DPDT

Switch Rating: 1 amps @ 120  VAC  VDC  Pneumatic 150 psig max. supply

Switch Housing:  NEMA 4 (IP55)  NEMA 4 & 7 (IP65) Class I, Group B, C, D, Div. 1 & 2  EExd IIC T6 CENELEC/BASEEFA

Min.  Oper.  I/F S.G. 0.993 Max. Liquid Temp 121  °F  °C Max Press 5103  psig  kg/cm<sup>2</sup>  kPa  bar

Flange Connection Size:  1"  1-1/2"  2" Rating:  150#  300#  600#   RF  RTJ  WN

Material of Construction: A106B CARBON STEEL  Float  Displacer Material 316/316L SS

Certified by: Michael C. P. [Signature] Date 3-8-99

Ref. Drawing No.	Ed No.	Rev	Drawn by	Date	Approved by	Date	Page of
390-291	687	1	J Howell	08-01-94	[Signature]	8-1-94	

### Installation Dimensions

**Options / Tags**

FUNGICIDAL VARNISH  
OVERSIZED NAMEPLATE  
FOR CUSTOMER TAGGING  
SD=400MM CENTERS  
EC=3/4"NPT VENT W/PLG  
MILL TEST REPORT  
FACTORY GENERAL  
APPEARANCE AND  
DIMENSIONAL INSPCTN  
REPORT FOR LEVEL  
CONTROL DEVICES  
CALIBRATION CERT.  
LEVEL SWITCH  
HYDROSTATIC PRESSURE  
TEST CERTIFICATION  
Q.A. TEST REPORTS -  
MECHANICAL LEVEL  
1" 150# RF DRAIN FLG  
HAWKE CABLE CLAND  
501/453/UNIV/O/M20  
POST WELD HEAT  
TREATMENT

TAG NO:  
LS-12012  
SERVICE:  
BODY:A106CS,TRM:316SS

B		C		F		G	
IN	MM	IN	MM	IN	MM	IN	MM
3-3/4	76	4-1/2	114	6-1/2	165	15-3/4	400

(Not for construction unless certified.)

---

Customer: ABB LIMMUS GLOBAL, INC

Customer P.O. No./Inquiry No. 10162-1012 SOR Quote/Order No. 326132 Item \_\_\_\_\_ Qty 1

Model No. 121A-C2D-B-S1-T6-VVTTSDCEMRX7

Switch Type:  GOLD CONTACT MINI HERMET No. switch contacts 1  SPDT  DPDT

Switch Rating: 1 amps @ 120  VAC  VDC  Pneumatic 150 psig max. supply

Switch Housing:  NEMA 4 (IP55)  NEMA 4 & 7 (IP65) Class I, Group B, C, D, Div. 1 & 2  EExd IIC T6 CENELEC/BASEEFA

Min.  Oper.  I/F S.G. 1.207 Max. Liquid Temp 121  °F  °C Max Press 1966  psig  kg/cm<sup>2</sup>  kPa  bar

Flange Connection Size:  1"  1-1/2"  2" Rating:  150#  300#  600#   RF  RTJ  WN

Material of Construction: A106B CARBON STEEL  Float  Displacer Material 316/316L SS

Certified by: Michael C. P. [Signature] Date 3-8-99

Ref. Drawing No.	Ed No.	Rev	Drawn by	Date	Approved by	Date	Page of
390-291	3687	1	J Howell	08-01-94	[Signature]	8-1-94	



### Installation Dimensions

**Options / Tags**

FUNGICIDAL VARNISH  
OVERSIZED NAMEPLATE  
FOR CUSTOMER TAGGING  
SD=400MM CENTERS  
EC=3/4" NPT VENT W/PLUG  
MILL TEST REPORT  
FACOTRY GENERAL  
APPEARANCE AND  
DIMENSIONAL INSPCTN  
REPORT FOR LEVEL  
CONTROL DEVICES  
CALIBRATION CERT.  
LEVEL SWITCH  
HYDROSTATIC PRESSURE  
TEST CERTIFICATION  
Q.A. TEST REPORTS -  
MECHANICAL LEVEL  
1" 150# RF DRAIN FLNG  
HAWKE CABLE LGAND  
501/453/UNIV/O/M20  
A333-GR.6 LO-TEMP CS

TAG NO: S.G.  
LS-15014A 0.576  
SERVICE:  
BODY:A333-GR6,  
TRIM:316SS  
LS-15014B 0.576  
SERVICE:  
BODY :A333-GR6,  
TRIM:316SS  
LS-15014C 0.576  
SERVICE:  
BODY:A333-GR6  
TRIM:316SS  
LS-15016A 0.560  
SERVICE:  
BODY:A333-GR6,  
TRIM:316SS

S.G.	B		C		F		G	
	IN	MM	IN	MM	IN	MM	IN	MM
0.576	3-1/16	78	4	102	6-1/2	165	15-3/4	400
0.56	2-7/8	73	3-7/8	98.5				

### Installation Dimensions

**Options / Tags**

FUNGICIDAL VARNISH  
OVERSIZED NAMEPLATE  
FOR CUSTOMER TAGGING  
SD=400MM CENTERS  
EC=3/4" NPT VENT W/PLUG  
MILL TEST REPORT  
FACOTRY GENERAL  
APPEARANCE AND  
DIMENSIONAL INSPCTN  
REPORT FOR LEVEL  
CONTROL DEVICES  
CALIBRATION CERT.  
LEVEL SWITCH  
HYDROSTATIC PRESSURE  
TEST CERTIFICATION  
Q.A. TEST REPORTS -  
MECHANICAL LEVEL  
1" 150# RF DRAIN FLNG  
HAWKE CABLE LGAND  
501/453/UNIV/O/M20  
150# HEAD & BODY FLG

TAG NO. S.G.  
LS-15019A 0.532  
SERVICE:  
BODY:A106CS,TRM:316SS  
LS-15019B 0.532  
SERVICE:  
BODY:A106CS,TRM:316SS  
LS-15019C 0.532  
SERVICE:  
BODY:A106CS,TRM:316SS  
LS-15021A 0.513  
SERVICE:  
BODY:A106CS,TRM:316SS  
LS-15021B 0.513  
SERVICE:  
BODY:A106CS,TRM:316SS  
LS-15021C 0.513  
SERVICE:  
BODY:A106CS,TRM:316SS

S.G.	B		C		F		G	
	IN	MM	IN	MM	IN	MM	IN	MM
0.532	3	76	3-5/8	92	7-7/16	189	15-3/4	400
0.513	2-3/4	70	3-1/2	89				

(Not for construction unless certified.)

Customer ABB LUMMUS GLOBAL, INC

Customer P.O. No./Inquiry No. 10162-1012 SOR Quote/Order No. 326132 Item \_\_\_\_\_

Model No. 101A-C2D-B-G1-T6-VVTTSDCEMRX6 Qty 6

Switch Type:  GOLD CONTACT HERM. SEALED  Pneumatic No. switch contacts 1  SPDT  DPDT

Switch Rating: 1 amps @ 120 VAC  VDC  Pneumatic 150 psig max. supply

Switch Housing:  NEMA 4 (IP55)  NEMA 4 & 7 (IP65) Class I, Group B, C, D, Div. 1 & 2  EExd IIC T6 CENELEC/BASEEFA

Min.  Oper.  F S.G. SEE TAGS Max. Liquid Temp. 121 °F  °C Max Press. 1966 psig  kg/cm<sup>2</sup>  kPa  bar

Flange Connection Size:  1"  1-1/2"  2" Rating:  150#  300#  600#  RF  RTJ  WN

Material of Construction: A333-GR.6 LO-TEMP CS  Float  Displacer Material 316/316L SS

Certified by: Michael C. Howell Date 3-8-99

Ref. Drawing No.	EO No.	Rev.	Drawn by	Date	Approved by	Date	Page of
390-261	3651	1	J Howell	06-02-94	<i>[Signature]</i>	6-2-94	

(Not for construction unless certified.)

Customer ABB LUMMUS GLOBAL, INC

Customer P.O. No./Inquiry No. 10162-1012 SOR Quote/Order No. 326132 Item \_\_\_\_\_

Model No. 103A-C2D-B-S1-T6-VVTTSDCEMRX7 Qty 6

Switch Type:  GOLD CONTACT MINI HERM.  Pneumatic No. switch contacts 1  SPDT  DPDT

Switch Rating: 1 amps @ 120 VAC  VDC  Pneumatic 150 psig max. supply

Switch Housing:  NEMA 4 (IP55)  NEMA 4 & 7 (IP65) Class I, Group B, C, D, Div. 1 & 2  EExd IIC T6 CENELEC/BASEEFA

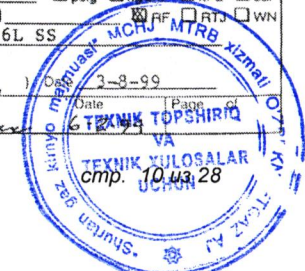
Min.  Oper.  F S.G. SEE TAGS Max. Liquid Temp. 121 °F  °C Max Press. 1966 psig  kg/cm<sup>2</sup>  kPa  bar

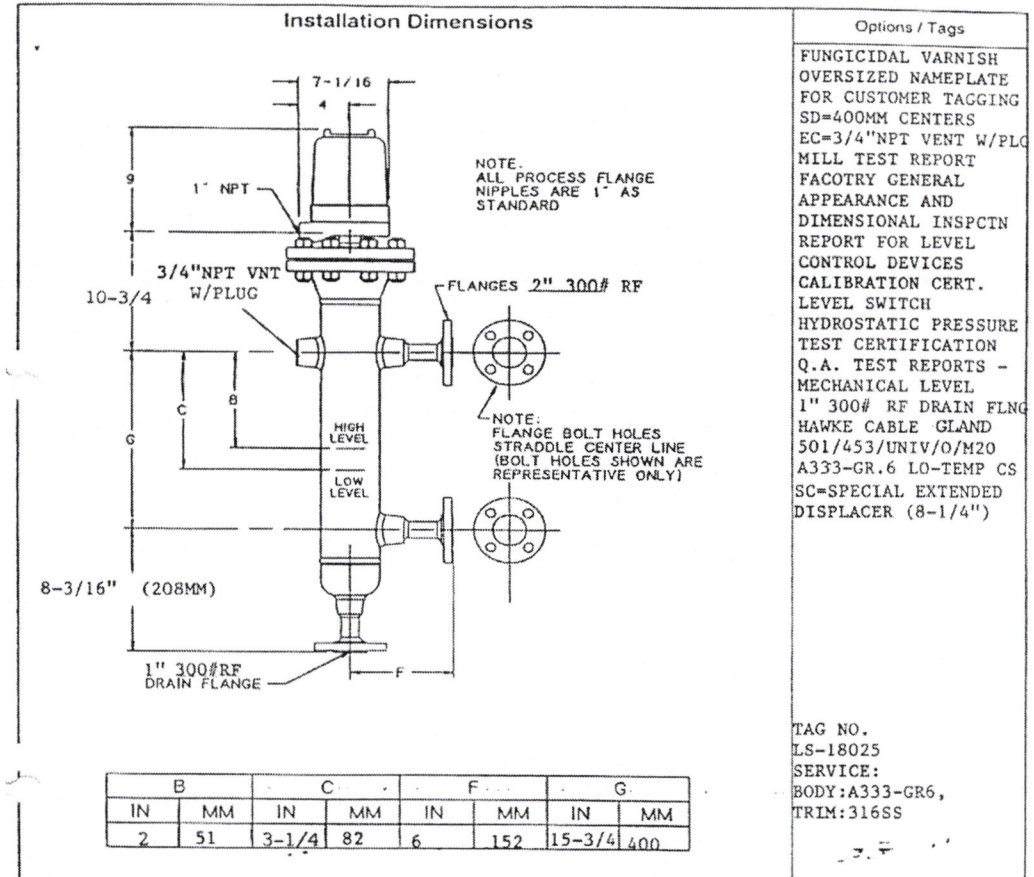
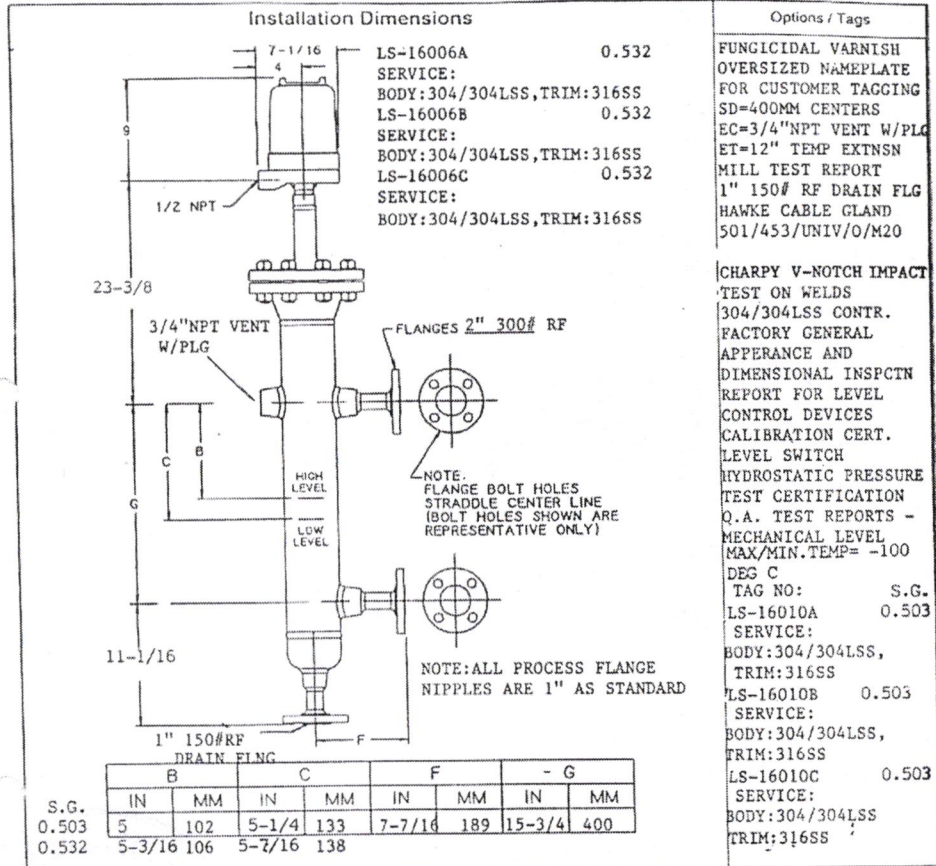
Flange Connection Size:  1"  1-1/2"  2" Rating:  150#  300#  600#  RF  RTJ  WN

Material of Construction: A106B CARBON STEEL  Float  Displacer Material 316/316L SS

Certified by: \_\_\_\_\_ Date 3-8-99

Ref. Drawing No.	EO No.	Rev.	Drawn by	Date	Approved by	Date	Page of
390-261	3651	1	J Howell	06-02-94	<i>[Signature]</i>		





Customer ABB LUMMUS GLOBAL, INC.

Customer P.O. No./Inquiry No. 10162-1012 SOR Quote/Order No. 326132 Item \_\_\_\_\_

Model No. 109C-C2D-C-G1-T6-VVTTSDCECTMRX8 Qty 6

Switch Type:  GLD CONTACT HERM. SEALED No. switch contacts 1  SPDT  DPDT

Switch Rating: 1 amps @ 120 VAC  VDC  Pneumatic 150 psig max. supply

Switch Housing:  NEMA 4 (IP55)  NEMA 4 & 7 (IP65) Class I, Group B, C, D, Div. 1 & 2  EExd IIC T6 CENELEC/BASEEFA

Min.  Oper.  I/F S.G. See Tags Max. Liquid Temp. 121 °F  °C Max. Press. 1966 psig  kg/cm<sup>2</sup>  kPa  bar

Flange Connection Size:  1"  1-1/2"  2" Rating:  150#  300#  600#  RTJ  WN

Material of Construction: 304/304LSS CONST.  Float  Displacer Material 316/316L SS

Certified by: \_\_\_\_\_ Date 3-8-99

Ref. Drawing No. 390-254 EO No. 3651 Rev. 1 Drawn by J Howell Date 05-24-94 Approved by [Signature] Date 5-24-94 Page 1 of \_\_\_\_\_

Customer ABB LUMMUS GLOBAL, INC.

Customer P.O. No./Inquiry No. 10162-1012 SOR Quote/Order No. 326132 Item \_\_\_\_\_

Model No. 742A-C2D-B-G1-T6-VVTTSDCECTMRX7 Qty 1

Switch Type:  GOLD CONTACT HERM. SEALED  Pneumatic No. switch contacts 1  SPDT  DPDT

Switch Rating: 1 amps @ 120 VAC  VDC  Pneumatic 150 psig max. supply

Switch Housing:  NEMA 4 (IP55)  NEMA 4 & 7 (IP65) Class I, Group B, C, D, Div. 1 & 2  EExd IIC T6 CENELEC/BASEEFA

Min.  Oper.  I/F S.G. 0.392 Max. Liquid Temp. 121 °F  °C Max. Press. 5103 psig  kg/cm<sup>2</sup>  kPa  bar

Flange Connection Size:  1"  1-1/2"  2" Rating:  150#  300#  600#  RTJ  WN

Material of Construction: A333-GR.6 LO-TEMP CS  Float  Displacer Material 316/316L SS

Certified by: [Signature] Date 3-8-99

Ref. Drawing No. 390-261 EO No. 3651 Rev. 1 Drawn by J Howell Date 06-02-94 Approved by [Signature] Date \_\_\_\_\_ Page \_\_\_\_\_ of \_\_\_\_\_



### Installation Dimensions

NOTE:  
ALL PROCESS FLANGE  
NIPPLES ARE 1" AS  
STANDARD

NOTE:  
FLANGE BOLT HOLES  
STRADDLE CENTER LINE  
(BOLT HOLES SHOWN ARE  
REPRESENTATIVE ONLY)

B		C		F		- G	
IN	MM	IN	MM	IN	MM	IN	MM
3	76	3-5/8	92	7-7/16	189	15-3/4	400

(Not for construction unless certified.)

### Options / Tags

FUNGICIDAL VARNISH  
OVERSIZED NAMEPLATE  
FOR CUSTOMER TAGGING  
SD=400MM CENTERS  
EC=3/4"NPT VENT W/PLG  
ET=12" TEMP EXTNSN  
MILL TEST REPORT  
1" 150# RF DRAIN FLG  
HAWKE CABLE GLAND  
501/453/UNIV/O/M20  
150# HEAD & BODY FLG  
CHARPY V-NOTCH ON  
WELDS  
304/304LSS CONTR.  
FACTORY GENERAL  
APPEARANCE AND  
DIMENSIONAL INSPCTN  
REPORT FOR LEVEL  
CONTROL DEVICES  
CALIBRATION CERT.  
LEVEL SWITCH  
HYDROSTATIC PRESSURE  
TEST CERTIFICATION  
Q.A. TEST REPORTS -  
MECHANICAL LEVEL  
Max/Min.Temp. = -120  
DEG C  
TAG NO:  
LS-16007A  
SERVICE:  
BODY:304/304LSS,  
TRIM:316SS  
LS-16007B  
SERVICE:  
BODY:304/304LSS,  
TRIM:316SS  
LS-16007C  
SERVICE:  
BODY:304/304LSS  
TRIM:316SS

Customer: ABB LUMMUS GLOBAL, INC.

Customer P.O. No./Inquiry No. 10162-1012 SOR Quote/Order No. 326132 Item \_\_\_\_\_

Model No. 103C-C2D-C-G1-T6-VVTSDECETMRX9 Qty 3

Switch Type:  GLD CONTACT HERM. SEALED No. switch contacts 1  SPDT  DPDT

Switch Rating: 1 amps @ 120 VAC  VDC  Pneumatic 150 psig max. supply

Switch Housing:  NEMA 4 (IP55)  NEMA 4 & 7 (IP65) Class I, Group B, C, D, Div. 1 & 2  Exd IIC T6 CENELEC/BASEEFA

Flange Connection Size:  1"  1-1/2"  2" Rating:  150#  300#  600#  RF  RTJ  WN

Material of Construction: 304/304LSS CONST.  Float  Displacer Material 316/316L SS

Certified by: \_\_\_\_\_ ( ) Date 3-8-99

Ref. Drawing No. <u>390-254</u>	EO No. <u>3651</u>	Rev. <u>1</u>	Drawn by <u>9 Howell</u>	Date <u>05-24-94</u>	Approved by <u>[Signature]</u>	Date <u>5-24-94</u>	Page of _____
------------------------------------	-----------------------	------------------	-----------------------------	-------------------------	-----------------------------------	------------------------	------------------

SOR Order #332830

Model # 121A-C2D-B-S1-T6-ECTTSDVVMRX6

Tag # LS-13008,LSA-40002

Max Pressure Rating: 1965 KPA @ 38 DEG C

Max Temperature Rating: 121 DEG C

### INSTALLATION DIMENSIONS

NOTE:  
FLANGE BOLT HOLES  
STRADDLE CENTER LINE  
(BOLT HOLES SHOWN ARE  
REPRESENTATIVE ONLY)

S.G.	B	C
.796	2-3/4" 70MM	3-7/8" 98MM
1.1	3-1/2" 89MM	4-5/16" 110MM

Dimensions:

B: SEE ABOVE inches \_\_\_\_\_ mm

C: \_\_\_\_\_ inches \_\_\_\_\_ mm

F: 6 inches 152 mm

G: \_\_\_\_\_ inches \_\_\_\_\_ mm

Size & Connection: See Page 2

Page 1 of 4

Drawing #100/741-3/801/NS/VVD/EC/

This drawing is the exclusive property of SOR. No use whatsoever of the information contained hereon, nor reproduction in whole or in part may be made without the express written permission of SOR.

PAGE 2

Linear = $\frac{mm}{in}$		
SOR Model Number 121A-C2D-B-S1-T6-ECTTSDVVMRX6		
Descriptions <b>LVL SWT-FLT 100 SERIES</b>  Consists of the following: - 121 = FLANGED EXTERNAL CHAMBER, FLOAT OPERATED - A = A106B CARBON STEEL CONSTRUCTION = SIDE/SIDE PROCESS CONNECTIONS WITH 1 INCH NPT (F) DRAIN (VVD ARRANGEMENT) - 2 = 2 INCH - D = 300# RF FLANGE - B = 316/316LSS FLOAT, 400SS ATTRACTION SLEEVE - S = DRY CONTACT, MINI-HERMETICALLY SEALED SWITCH MECHANISM, GOLD CONTACT, 1 AMP 120VAC, 1 AMP 30VDC. - 1 = 1 SPDT - T6 = EXPLOSION PROOF CAST IRON HOUSING, BASEEFA BXED IIC T6, M20 X 1.5 CONDUIT, NEMA 4X/IP65 - EC = EXTRA CONNECTION (AS SPECIFIED) - TT = 304SS TAG PERMANENTLY ATTACHED TO HOUSING	Tag Numbers <b>LS-13008</b> SERVICE: BODY: A106 CS, TRIM: 316SS LSA-40002 SERVICE: S.C. IN FA-4004 BODY: A106 CS, TRIM: 316SS	Specific Gravity S.G. .796  S.G. 1.065

This drawing is the exclusive property of SOR. No use whatsoever of the information contained hereon, nor reproduction in whole or in part may be made without the express written permission of SOR.

PAGE 3

Linear = $\frac{mm}{in}$		
SOR Model Number 121A-C2D-B-S1-T6-ECTTSDVVMRX6		
Descriptions - SD = SPECIAL DIMENSION (AS SPECIFIED) - VV = FUNGICIDAL VARNISH - MR = CERTIFIED MATERIAL TEST REPORTS - "X" IN ACCESSORY POSITION IS SPECIAL. SEE BELOW.  14 FACTORY GENERAL APPEARANCE AND DIMENSIONAL INSPECTION REPORT FOR LEVEL CONTROL DEVICES 97002 CALIBRATION CERTIFICATE 97003 LEVEL SWITCH HYDROSTATIC PRESSURE TEST CERTIFICATION 9012171 Q.A. TEST REPORTS - MECHANICAL LEVEL  X5= HAWKE CABLE GLAND 501/453/UNIV/O/M20 X6= 1" 150# RF DRAIN FLANGE	Tag Numbers	Specific Gravity

MCHU MTRB xizmati O'z. M. F. IGA' A.  
 TEXNIK TOPSHIQA VA BOSHQIQA  
 Shurtan GKM

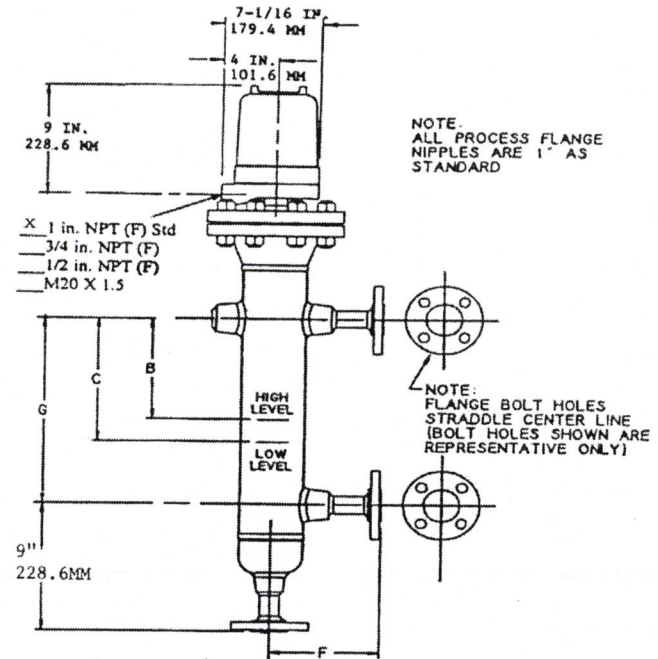
PAGE 4

This drawing is the exclusive property of SOR. No use whatsoever of the information contained herein, nor reproduction in whole or in part may be made without the express written permission of SOR.

SOR Order # 332830  
 Model # 101C-C2D-C-V1-T6-IDECTSDVVMRX8  
 Tag # LS-17019

Max Pressure Rating: 1965 KPA @ 38 DEG C  
 Max Temperature Rating: 204 DEG C

INSTALLATION DIMENSIONS



Dimensions:

B:	4-3/16	inches	106	mm
C:	5-3/4	inches	146	mm
F:	6-1/2	inches	165	mm
G:	15-3/4	inches	400	mm

Electrical Connection: See Page 2  
 Flange Size & Connection: See Page 2

Page 1 of 4  
 Drawing #100/741-3/801-2/OS/FLG/VVD

SOR Model Number: 121A-C2D-B-S1-T6-ECTSDVVMRX6

Descriptions	Tag Numbers	Specific Gravity
SD= 400MM CENTERS EC= 3/4" NPT VENT PLUGGED MAX PRES: 1965 KPA @ 38C MAX TEMP: 121 DEG C RATING: 1 AMP @ 24 VDC		



PAGE 2

This drawing is the exclusive property of SOR. No use whatsoever of the information contained hereon, not reproduced in whole or in part may be made without the express written permission of SOR.

Linear =  $\frac{mm}{in}$

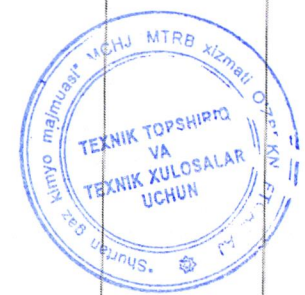
SOR Model Number 101C-C2D-C-V1-T6-IDECTSDVVMRX8		
Descriptions <b>LVL SWT-FLT 100 SERIES</b>  Consists of the following: - 101 = FLANGED EXTERNAL CHAMBER, FLOAT OPERATED - C = 316/316LSS CONSTRUCTION = SIDE/SIDE PROCESS CONNECTIONS WITH 1 INCH NPT (F) DRAIN (VVD ARRANGEMENT) - 2 = 2 INCH - D = 300# RF FLANGE - C = 316/316LSS FLOAT AND ATTRACTION SLEEVE - V = DRY CONTACT, MINI-HERMETICALLY SEALED SWITCH MECHANISM, HIGH TEMPERATURE, 5 AMPS 250VAC, 1.5 AMPS 30VDC. - 1 = 1 SPDT - T6 = EXPLOSION PROOF CAST IRON HOUSING, BASEEPA EXD IIC T6, M20 X 1.5 CONDUIT, NEMA 4X/IP65 - ID = INTERFACE DETECTION (S.G. AS SPECIFIED).	Tag Numbers LS-17019 SERVICE:AMINE STRPR REFLUX DRM BODY: 316SS, TRIM: 316SS	Specific Gravity IF SG .628/.986

PAGE 3

This drawing is the exclusive property of SOR. No use whatsoever of the information contained hereon, not reproduced in whole or in part may be made without the express written permission of SOR.

Linear =  $\frac{mm}{in}$

SOR Model Number 101C-C2D-C-V1-T6-IDECTSDVVMRX8		
Descriptions - EC = EXTRA CONNECTION (AS SPECIFIED) - TT = 304SS TAG PERMANENTLY ATTACHED TO HOUSING - SD = SPECIAL DIMENSION (AS SPECIFIED) - VV = FUNGICIDAL VARNISH - MR = CERTIFIED MATERIAL TEST REPORTS * IN ACCESSORY POSITION IS SPECIAL. SEE BELOW.  94014 FACTORY GENERAL APPEARANCE AND DIMENSIONAL INSPECTION REPORT FOR LEVEL CONTROL DEVICES 97002 CALIBRATION CERTIFICATE 97003 LEVEL SWITCH HYDROSTATIC PRESSURE TEST CERTIFICATION 9012171 Q.A. TEST REPORTS - MECHANICAL LEVEL  X5= HAWKE CABLE GLAND 501/453/UNIV/O/M20	Tag Numbers	Specific Gravity



PAGE 4

This drawing is the exclusive property of SOR. No use whatsoever of the information contained hereon, nor reproduction in whole or in part may be made without the express written permission of SOR.

SOR Model Number 101C-C2D-C-V1-T6-IDECTSDVVMRX8

Descriptions

X6= 1" 150# RF DRAIN FLANGE  
 X7= SPIRAL WOUND GASKETS  
 X8= HI-TEMP GOLD CONTACT SWITCH

400MM CENTERS  
 E= 3/4" NPT VENT PLUGGED  
 ID= .628/.986

MAX PRES: 1965 KPA @ 38C  
 MAX TEMP: 204 DEG C  
 RATING: 1 AMP @ 24 VDC

Tag Numbers

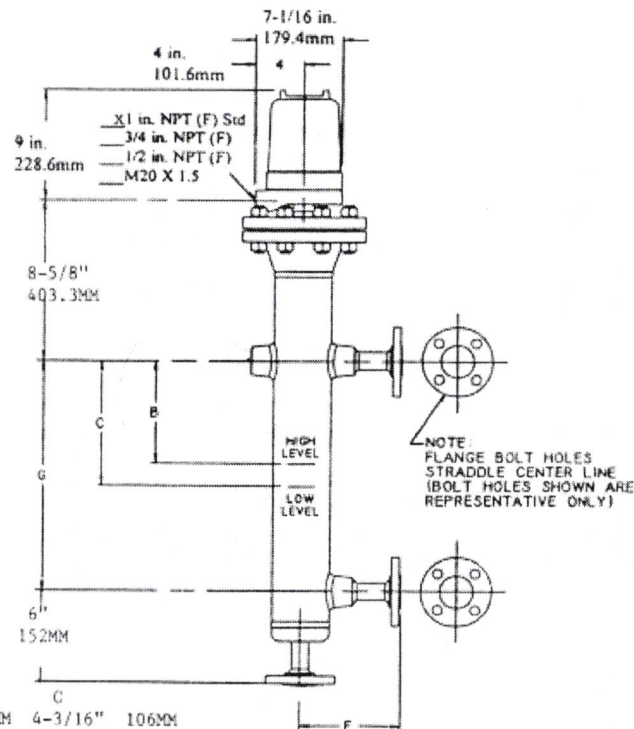
Specific Gravity



SOR Order # 332830  
 Model # 121A-C2D-B-V1-T6-ECTSDVVMRX8  
 Tag # LS-17020,LS-60053,LA-61051,

Max Pressure Rating: 1965 KPA @ 38 DEG C  
 Max Temperature Rating: 204 DEG C

INSTALLATION DIMENSIONS



S.G.	B	C
.974	3-1/4" 79MM	4-3/16" 106MM
.958	3-1/4" 79MM	4-3/16" 106MM
.909	3-1/8" 79MM	4-1/16" 103MM

Dimensions:

B:	SEE ABOVE	inches	mm
C:		inches	mm
F:	6	inches	152 mm
G:	15-3/4"	inches	400 mm

Size & Connection: See Page 2

Page 1 of 4  
 Drawing #100/741-3/801/NS/VVD/EC/



This drawing is the exclusive property of SOR. No use whatsoever of the information contained herein, nor reproduction in whole or in part may be made without the express written permission of SOR.

This drawing is the exclusive property of SOR. No use whatsoever of the information contained herein, nor reproduction in whole or in part may be made without the express written permission of SOR.

SOR Model Number 121A-C2D-B-V1-T6-ECTTSDVVMRX8

Descriptions	Tag Numbers	Specific Gravity
LVL SWT-FLT 100 SERIES	LS-17020	S.G. .974
Consists of the following:	SERVICE: AMINE STRIPPER	
- 121 = FLANGED EXTERNAL CHAMBER, FLOAT OPERATED	BODY: A106 CS, TRIM: 316SS	
- A = A106B CARBON STEEL CONSTRUCTION	LS-60053	S.G. .958
- = SIDE/SIDE PROCESS CONNECTIONS	SERVICE: LP CON. DRUM	
WITH 1 INCH NPT (F) DRAIN (VVD ARRANGEMENT)	BODY: A106 CS, TRIM: 316SS	
- 2 = 2 INCH	LA-61051	S.G. .909
- D = 300# RF FLANGE	SERVICE: BLOWDOWN DRUM	
- B = 316/316LSS FLOAT, 400SS ATTRACTION SLEEVE	BODY: A106 CS, TRIM: 316SS	
- V = DRY CONTACT, MINI-HERMETICALLY SEALED SWITCH MECHANISM, HIGH TEMPERATURE, 5 AMPS 250VAC, 1.5 AMPS 30VDC.		
- 1 = 1 SPDT		
- T6 = EXPLOSION PROOF CAST IRON HOUSING, BASEEFA BXD IIC T6, M20 X 1.5 CONDUIT, NEMA 4X/IP65		
- EC = EXTRA CONNECTION (AS SPECIFIED)		
- TT = 304SS TAG PERMANENTLY ATTACHED		

SOR Model Number 121A-C2D-B-V1-T6-ECTTSDVVMRX8

Descriptions	Tag Numbers	Specific Gravity
TO HOUSING		
- SD = SPECIAL DIMENSION (AS SPECIFIED)		
- VV = FUNGICIDAL VARNISH		
- MR = CERTIFIED MATERIAL TEST REPORTS		
- *X* IN ACCESSORY POSITION IS SPECIAL. SEE BELOW.		
9-114		
FACTORY GENERAL APPEARANCE AND DIMENSIONAL INSPECTION REPORT FOR LEVEL CONTROL DEVICES		
97002		
CALIBRATION CERTIFICATE		
97003		
LEVEL SWITCH HYDROSTATIC PRESSURE TEST CERTIFICATION		
9012171		
Q.A. TEST REPORTS - MECHANICAL LEVEL		
X5 = HAWKE CABLE GLAND		
501/453/UNIV/O/M20		
X6 = 1" 150# RF DRAIN FLANGE		

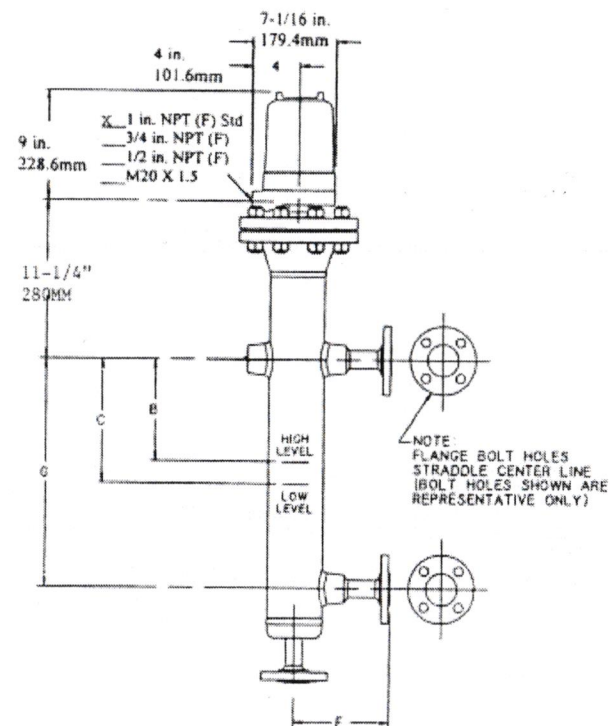


PAGE 4

SOR Order # 332830  
 Model # 801A-C2D-C-S1-T6-ECTTSDVVMRX8  
 Tag # LS-18015A, LS-18015B, LS-18015C

Max Pressure Rating: 5103 KPA @ 38 DEG C  
 Max Temperature Rating: 121 DEG C

INSTALLATION DIMENSIONS



Dimensions:

B:	1-1/2	inches	38	mm
C:	3-3/4	inches	95	mm
F:	8	inches	203	mm
G:	15-3/4	inches	400	mm

Size & Connection: See Page 2

Page 1 of 4  
 Drawing #100/741-3/801/NS/VVD/EC/

This drawing is the exclusive property of SOR. No use whatsoever of the information contained herein, nor reproduction in whole or in part may be made without the express written permission of SOR.

SOR Model Number 121A-C2D-B-V1-T6-ECTTSDVVMRX8

Descriptions

X7= SPIRAL WOUND GASKETS  
 X8= HI-TEMP GOLD CONTACT SWITCH  
 SD= 400MM CENTERS  
 RC= 3/4" NPT VENT PLUGGED  
 MAX PRES: 1945 KPA @ 38C  
 MAX TEMP: 204 DEG C  
 RATING: 1 AMP @ 24 VDC

Tag Numbers

Specific Gravity



PAGE 2		
Linear = <input type="checkbox"/> in.		
SOR Model Number 801A-C2D-C-S1-T6-ECTTSDVVMRX8		
Descriptions	Tag Numbers	Specific Gravity
LVL SWT 741-743, 801, 802	LS-18015A	S.G.
Consists of the following:	SERVICE:	
- 801 = FLANGED EXTERNAL CHAMBER, DISPLACER OPERATED	BODY: A106 CS, TRIM: 316SS	
- A = A106B CARBON STEEL CONSTRUCTION	LS-18015B	S.G.
- C = SIDE/SIDE PROCESS CONNECTIONS WITH 1 INCH NPT (F) DRAIN (VVD ARRANGEMENT)	SERVICE:	
- 2 = 2 INCH	BODY: A106 CS, TRIM: 316SS	S.G.
- D = 300# RF FLANGE	LS-18015C	
- C = 316/316LSS DISPLACER AND ATTRACTION SLEEVE	SERVICE:	
- S = DRY CONTACT, MINI-HERMETICALLY SEALED SWITCH MECHANISM, GOLD CONTACT, 1 AMP 120VAC, 1 AMP 30VDC.	BODY: A106 CS, TRIM: 316SS	
- 1 = 1 SPDT		
- T6 = EXPLOSION PROOF CAST IRON HOUSING, BASEEPA EXD IIC T6, M20 X 1.5 CONDUIT, NEMA 4X/IP65		
- EC = EXTRA CONNECTION (AS SPECIFIED)		
- TT = 304SS TAG PERMANENTLY ATTACHED TO HOUSING		

PAGE 3		
Linear = <input type="checkbox"/> in.		
SOR Model Number 801A-C2D-C-S1-T6-ECTTSDVVMRX8		
Descriptions	Tag Numbers	Specific Gravity
- SD = SPECIAL DIMENSION (AS SPECIFIED)		
- VV = FUNGICIDAL VARNISH		
- MR = CERTIFIED MATERIAL TEST REPORTS		
- "X" IN ACCESSORY POSITION IS SPECIAL. SEE BELOW.		
5 14		
FACTORY GENERAL APPEARANCE AND DIMENSIONAL INSPECTION REPORT FOR LEVEL CONTROL DEVICES		
97002		
CALIBRATION CERTIFICATE		
97003		
LEVEL SWITCH HYDROSTATIC PRESSURE TEST CERTIFICATION		
9012171		
Q.A. TEST REPORTS - MECHANICAL LEVEL		
X5= HAWKE CABLE GLAND		
501/453/UNIV/O/M20		
X6= 1" 300# RF DRAIN		
FLANGE		
X7= 1" 300# HEAD FLANGE		



This drawing is the exclusive property of SOR. No use whatsoever of the information contained hereon, nor reproduction in whole or in part, may be made without the express written permission of SOR.

PAGE 4

SOR Model Number: 801A-C2D-C-S1-T6-ECTTSDVVMRX8

Linear = in.

Description

XB= 3-1/2" X 6" DISPLACER  
 SD= 400MM CENTERS  
 EC= 3/4" NPT VENT PLUGGED  
 MAX PRES: 5103 KPA @ 38C  
 TEMP: 121 DEG C  
 RATING: 1 AMP @ 24 VDC

Tag Numbers

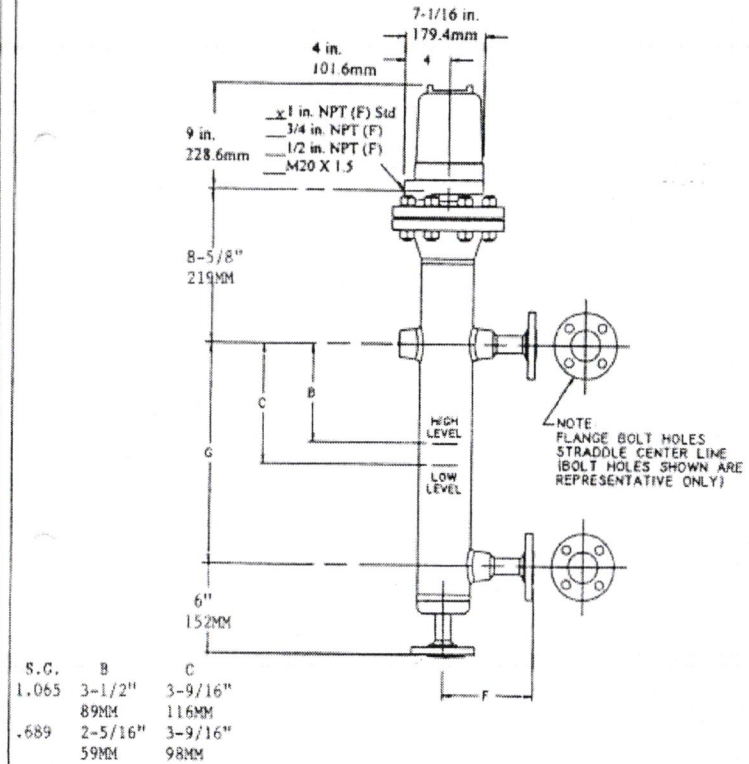
Specific Gravity



SOR Order # 332830  
 Model # 121A-C2D-B-S1-T6-ECTTSDVVMRX7  
 Tag # LS-40004, LS68007

Max Pressure Rating: 1965 KPA @ 38 DEG C  
 Max Temperature Rating: 121 DEG C

INSTALLATION DIMENSIONS



Dimensions:  
 B: SEE ABOVE inches \_\_\_\_\_ mm  
 C: \_\_\_\_\_ inches \_\_\_\_\_ mm  
 F: 6 inches 152 mm  
 G: 15-3/4 inches 400 mm

Size & Connection: See Page 2

Page 1 of 4  
 Drawing #100/741-3/801/NS/VVD/EC/

This drawing is the exclusive property of SOR. No use whatsoever of the information contained hereon, nor reproduction in whole or in part may be made without the express written permission of SOR.

PAGE 2

This drawing is the exclusive property of SOR. No use whatsoever of the information contained hereon, nor reproduction in whole or in part may be made without the express written permission of SOR.

PAGE 3

SOR Model Number 121A-C2D-B-S1-T6-ECTTSDVVMRX7		
Descriptions LVL SWT-FLT 100 SERIES  Consists of the following: - 121 = FLANGED EXTERNAL CHAMBER, FLOAT OPERATED - A = A106B CARBON STEEL CONSTRUCTION - 1 = SIDE/SIDE PROCESS CONNECTIONS WITH 1 INCH NPT (F) DRAIN (VVD ARRANGEMENT) - 2 = 2 INCH - D = 300# RF FLANGE - B = 316/316LSS FLOAT, 400SS ATTRACTION SLEEVE - 3 = DRY CONTACT, MINI-HERMETICALLY SEALED SWITCH MECHANISM, GOLD CONTACT, 1 AMP 120VAC, 1 AMP 30VDC. - 1 = 1 SPDT - T6 = EXPLOSION PROOF CAST IRON HOUSING, BASENPA EXXD IIC T6, M20 X 1.5 CONDUIT, NEMA 4X/IP65 - EC = EXTRA CONNECTION (AS SPECIFIED) - TT = 304SS TAG PERMANENTLY ATTACHED TO HOUSING	Tag Numbers LS-40004 SERVICE: S.C. IN FB-4001 BODY: A106 CS, TRIM: 316SS LS-68007 SERVICE: FUEL VAP. DRUM BODY: A106 CS, TRIM: 316SS	Specific Gravity S.G. 1.065  S.G. .689

SOR Model Number 121A-C2D-B-S1-T6-ECTTSDVVMRX7		
Descriptions - SD = SPECIAL DIMENSION (AS SPECIFIED) - VV = FUNGICIDAL VARNISH - MR = CERTIFIED MATERIAL TEST REPORTS - "X" IN ACCESSORY POSITION IS SPECIAL. SEE BELOW.  97002 FACTORY GENERAL APPEARANCE AND DIMENSIONAL INSPECTION REPORT FOR LEVEL CONTROL DEVICES 97002 CALIBRATION CERTIFICATE 97003 LEVEL SWITCH HYDROSTATIC PRESSURE TEST CERTIFICATION 9012171 Q.A. TEST REPORTS - MECHANICAL LEVEL  X5= HAWKE CABLE GLAND 501/453/UMIV/O/M20 X6= 1" 150# RF DRAIN FLANGE X7= SPIRAL WOUND GASKETS	Tag Numbers	Specific Gravity

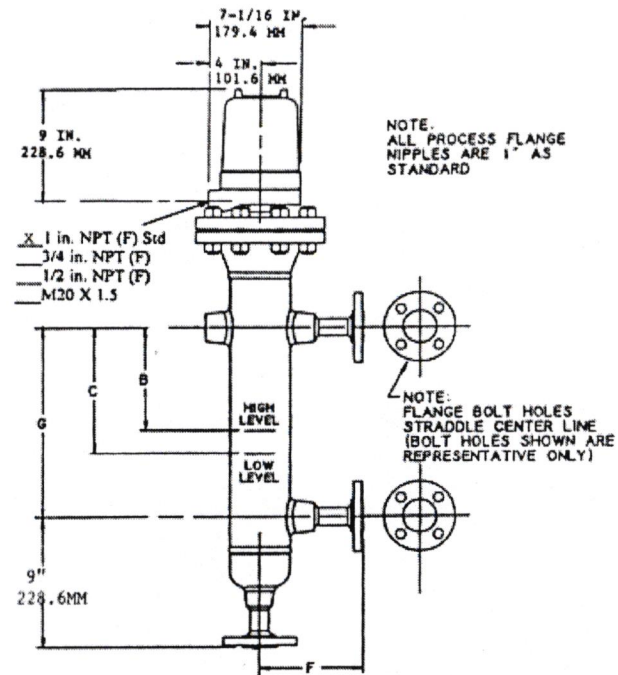


PAGE 4		
This drawing is the exclusive property of SOR. No use whatsoever of the information contained hereon, nor reproduction in whole or in part may be made without the express written permission of SOR.		
Line =  P		
SOR Model Number 121A-C2D-B-S1-T6-ECTTSDVVMRX7		
Descriptions SD= 400MM CENTERS EC= 3/4" NPT VENT PLUGGED MAX PRES: 1965 KPA @ 38C MAX TEMP: 121 DEG C ING: 1 AMP @ 24 VDC	Tag Numbers	Specific Gravity

SOR Order # 332830  
 Model # 101A-C2D-B-H1-T6-ECTTSDVVMRX7  
 Tag # LS-69007, LS-69008

Max Pressure Rating: 1965 KPA @ 38 DEG C  
 Max Temperature Rating: 177 DEG C

INSTALLATION DIMENSIONS



Dimensions:

B:	2-11/16	inches	68	mm
C:	3-3/4	inches	95	mm
F:	6-1/2	inches	165	mm
G:	15-3/4	inches	400	mm

Electrical Connection: See Page 2  
 Flange Size & Connection: See Page 2

Page 1 of 4  
 Drawing #100/741-3/801-2/OS/FLG/VVD

PAGE 2			PAGE 3		
<p>This drawing is the exclusive property of SOR. No use whatsoever of the information contained hereon, nor reproduction in whole or in part may be made without the express written permission of SOR.</p>			<p>This drawing is the exclusive property of SOR. No use whatsoever of the information contained hereon, nor reproduction in whole or in part may be made without the express written permission of SOR.</p>		
Linear = 1:100 in.			Linear = 1:100 in.		
SOR Model Number 101A-C2D-B-H1-T6-ECTTSDVVMRX7			SOR Model Number 101A-C2D-B-H1-T6-ECTTSDVVMRX7		
<p>Descriptions</p> <p>LVL SWT-FLT 100 SERIES</p> <p>Consists of the following:</p> <ul style="list-style-type: none"> <li>- 101 = FLANGED EXTERNAL CHAMBER, FLOAT OPERATED</li> <li>- A = A106B CARBON STEEL CONSTRUCTION</li> <li>- C = SIDE/SIDE PROCESS CONNECTIONS WITH 1 INCH NPT (F) DRAIN (VVD ARRANGEMENT)</li> <li>- 2 = 2 INCH</li> <li>- D = 300# RF FLANGE</li> <li>- B = 316/316LSS FLOAT, 400SS ATTRACTION SLEEVE</li> <li>- H = DRY CONTACT, HERMETICALLY SEALED SWITCH MECHANISM, HIGH TEMPERATURE, 5 AMPS 250VAC, 0.5 AMPS 30VDC.</li> <li>- 1 = 1 SPDT</li> <li>- T6 = EXPLOSION PROOF CAST IRON HOUSING, BASEEFA EXXD IIC T6, M20 X 1.5 CONDUIT, NEMA 4X/IP65</li> <li>- EC = EXTRA CONNECTION (AS SPECIFIED)</li> <li>- TT = 304SS TAG PERMANENTLY ATTACHED TO HOUSING</li> </ul>	<p>Tag Numbers</p> <p>LS-69007 SERVICE: CYCLOHEXANE, LPG, BUTENE BODY: A333-GR6, TRIM: 316SS LS-69008 SERVICE: CYCLOHEXANE, LPG, BUTENE BODY: A333-GR6, TRIM: 316SS</p>	<p>Specific Gravity</p> <p>S.G. .54</p> <p>S.G. .54</p>	<p>Descriptions</p> <ul style="list-style-type: none"> <li>- SD = SPECIAL DIMENSION (AS SPECIFIED)</li> <li>- VV = FUNGICIDAL VARNISH</li> <li>- MR = CERTIFIED MATERIAL TEST REPORTS</li> <li>- "X" IN ACCESSORY POSITION IS SPECIAL. SEE BELOW.</li> </ul> <p>14</p> <p>FACTORY GENERAL APPEARANCE AND DIMENSIONAL INSPECTION REPORT FOR LEVEL CONTROL DEVICES</p> <p>97002 CALIBRATION CERTIFICATE</p> <p>97003 LEVEL SWITCH HYDROSTATIC PRESSURE TEST CERTIFICATION</p> <p>9012171 Q.A. TEST REPORTS - MECHANICAL LEVEL</p> <p>X5= HAWKE CABLE GLAND 501/453/UNIV/O/M20 X6= 1" 150# RF DRAIN FLANGE X7= SPIRAL WOUND GASKETS</p>	<p>Tag Numbers</p>	<p>Specific Gravity</p>



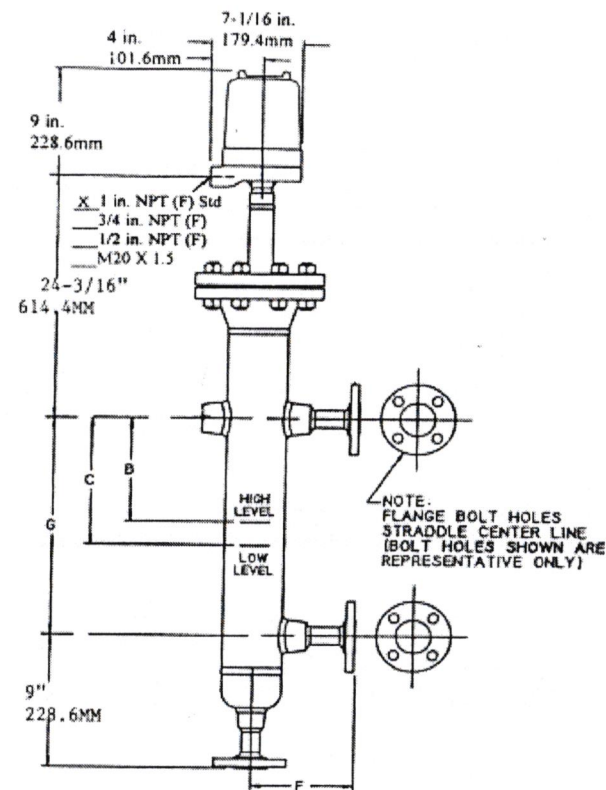
This drawing is the exclusive property of SOR. No use whatsoever of the information contained herein, nor reproduction in whole or in part may be made without the express written permission of SOR.

PAGE 4

SOR Order # 332830  
 Model # 101A-C2D-B-H1-T6-ETECTSDVVMRX8  
 Tag # LS-69051, LS-69052

Max Pressure Rating: 1965 KPA @ 38 DEG C  
 Max Temperature Rating: 232 DEG C

INSTALLATION DIMENSIONS



Dimensions:

B:	3-13/16	inches	97	mm
C:	4-1/2	inches	114	mm
F:	6-1/2	inches	165	mm
G:	15-3/4	inches	400	mm

Flange Size & Connection: See Page 2

Page 1 of 4  
 Drawing #100/741-743/801/VVD/ET/PLG

SOR Model Number 101A-C2D-B-H1-T6-ECTSDVVMRX7

Linear = in.

Descriptions	Tag Numbers	Specific Gravity
--------------	-------------	------------------

SD= 400MM CENTERS  
 EC= 3/4" NPT VENT PLUGGED  
 MAX PRES: 1965 KPA @ 38C  
 MAX TEMP: 177 DEG C  
 ING: 1 AMP @ 24 VDC





This drawing is the exclusive property of SOR. No use whatsoever of the information contained hereon, nor reproduction in whole or in part may be made without the express written permission of SOR.

PAGE 2

Linear =  $\frac{mm}{in}$

This drawing is the exclusive property of SOR. No use whatsoever of the information contained hereon, nor reproduction in whole or in part may be made without the express written permission of SOR.

PAGE 3

Linear =  $\frac{mm}{in}$

SOR Model Number 101A-C2D-B-H1-T6-ETECTTSDVVMRX8

Descriptions	Tag Numbers	Specific Gravity
LVL SWT-FLT 100 SERIES	LS-69051	S.G. .6-.97
Consists of the following:	SERVICE: WET FLARE	
- 101 = FLANGED EXTERNAL CHAMBER, FLOAT OPERATED	BODY: A333-GR6, TRIM: 316SS	
- A = A106B CARBON STEEL CONSTRUCTION = SIDE/SIDE PROCESS CONNECTIONS WITH 1 INCH NPT (F) DRAIN (VVD ARRANGEMENT)	LS-69052	S.G. .6-.97
- 2 = 2 INCH	SERVICE: WET FLARE	
- D = 300# RF FLANGE	BODY: A333-GR6, TRIM: 316SS	
- B = 316/316LSS FLOAT, 400SS ATTRACTION SLEEVE		
- H = DRY CONTACT, HERMETICALLY SEALED SWITCH MECHANISM, HIGH TEMPERATURE, 5 AMPS 250VAC, 0.5 AMPS 30VDC.		
- 1 = 1 SPDT		
- T6 = EXPLOSION PROOF CAST IRON HOUSING, BASKEPA BKXD IIC T6, M20 X 1.5 CONDUIT, NEMA 4X/IP65		
- ET = TEMPERATURE EXTENSION (LENGTH AS SPECIFIED)		
- EC = EXTRA CONNECTION (AS SPECIFIED)		

SOR Model Number 101A-C2D-B-H1-T6-ETECTTSDVVMRX8

Descriptions	Tag Numbers	Specific Gravity
- TT = 304SS TAG PERMANENTLY ATTACHED TO HOUSING		
- SD = SPECIAL DIMENSION (AS SPECIFIED)		
- VV = FUNGICIDAL VARNISH		
- MR = CERTIFIED MATERIAL TEST REPORTS		
- *X* IN ACCESSORY POSITION IS SPECIAL. SEE BELOW.		
94014		
FACTORY GENERAL APPEARANCE AND DIMENSIONAL INSPECTION REPORT FOR LEVEL CONTROL DEVICES		
97002		
CALIBRATION CERTIFICATE		
97003		
LEVEL SWITCH HYDROSTATIC PRESSURE TEST CERTIFICATION		
9012171		
Q.A. TEST REPORTS - MECHANICAL LEVEL		
X5 = HAWKE CABLE GLAND		
501/453/UNIV/O/M20		
X6 = 1" 150# RF DRAIN		



This drawing is the exclusive property of SOR. No use whatsoever of the information contained hereon, nor reproduction in whole or in part may be made without the express written permission of SOR.

SOR Model Number 101A-C2D-B-H1-T6-ECTTSDVVMRX8

Descriptions

FLANGE  
 X7= SPIRAL WOUND GASKETS  
 X8= HI-TEMP GOLD CONTACT SWITCH  
 SD= 400MM CENTERS  
 : 3/4" NPT VENT PLUGGED  
 b2= 6" TEMP. EXTENSION  
 MAX PRES: 1965 KPA @ 38C  
 MAX TEMP: 232 DEG C  
 RATING: 1 AMP @ 24 VDC

Tag Numbers

Specific Gravity

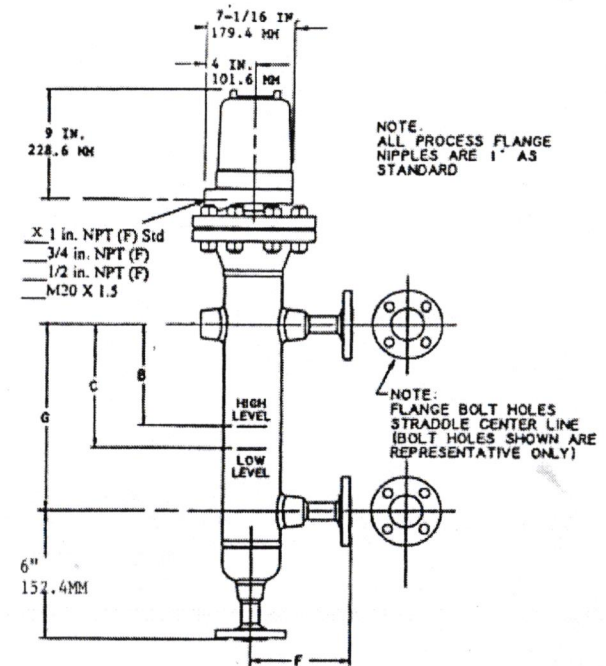
Linear = 1000 in



SOR Order # 332830  
 Model # 121C-C2D-C-V1-T6-ECTTSDVVMRX8  
 Tag # LS-17017A, LS-17018A, LS-17017B, LS-17018B, LS-69057, LS-69058,

Max Pressure Rating: 1896 KPA @ 38 DEG C  
 Max Temperature Rating: 204 DEG C

INSTALLATION DIMENSIONS



Dimensions:

B:	3	inches	76	mm
C:	3-7/8	inches	98	mm
F:	6	inches	152	mm
G:	15-3/4	inches	400	mm

Electrical Connection: See Page 2  
 Flange Size & Connection: See Page 2

Page 1 of 4  
 Drawing #100/741-3/801-2/OS/FLG/VVD/EC

This drawing is the exclusive property of SOR. No use whatsoever of the information contained hereon, nor reproduction in whole or in part may be made without the express written permission of SOR.

This drawing is the exclusive property of SOR. No use whatsoever of the information contained hereon, nor reproduction in whole or in part may be made without the express written permission of SOR.

SOR Model Number 121C-C2D-C-V1-T6-ECTTSDVVMRX8			SOR Model Number 121C-C2D-C-V1-T6-ECTTSDVVMRX8		
Descriptions	Tag Numbers	Specific Gravity	Descriptions	Tag Numbers	Specific Gravity
LVL SWT-FLT 100 SERIES	LS-17017A	S.G. .984	TO HOUSING		
Consists of the following:	SERVICE:ACID GAS RECOMP.KO DRM		- SD = SPECIAL DIMENSION (AS SPECIFIED)		
- 121 = FLANGED EXTERNAL CHAMBER, FLOAT OPERATED	BODY: 316SS, TRIM: 316SS		- VV = FUNGICIDAL VARNISH		
- C = 316/316LSS CONSTRUCTION	LS-17018A	S.G. .984	- MR = CERTIFIED MATERIAL TEST REPORTS		
- = SIDE/SIDE PROCESS CONNECTIONS	SERVICE:ACID GAS RECOMP.KO DRM		- "X" IN ACCESSORY POSITION IS SPECIAL.		
- WITH 1 INCH NPT (F) DRAIN (VVD ARRANGEMENT)	BODY: 316SS, TRIM: 316SS		SEE BELOW.		
- 2 = 2 INCH	LS-17017B	S.G. .984			
- D = 300# RF FLANGE	SERVICE:ACID GAS RECOMP.KO DRM		5 14		
- C = 316/316LSS FLOAT AND ATTRACTION SLEEVE	BODY: 316SS, TRIM: 316SS		FACTORY GENERAL APPEARANCE AND DIMENSIONAL INSPECTION REPORT FOR LEVEL CONTROL DEVICES		
- V = DRY CONTACT, MINI-HERMETICALLY SEALED SWITCH MECHANISM, HIGH TEMPERATURE, 5 AMPS 250VAC, 1.5 AMPS 30VDC.	LS-17019B	S.G. .984	97002		
- 1 = 1 SPDT	SERVICE:ACID GAS RECOMP.KO DRM		CALIBRATION CERTIFICATE		
- T6 = EXPLOSION PROOF CAST IRON HOUSING, BASEEPA EXD IIC T6, M20 X 1.5 CONDUIT, NEMA 4X/IP65	BODY: 316SS, TRIM: 316SS		97003		
- EC = EXTRA CONNECTION (AS SPECIFIED)	LS-69057	SG .97-1.0	LEVEL SWITCH HYDROSTATIC PRESSURE TEST CERTIFICATION		
- TT = 304SS TAG PERMANENTLY ATTACHED	SERVICE: ACID FLARE		9012171		
	BODY: 316SS, TRIM: 316SS		Q.A. TEST REPORTS - MECHANICAL LEVEL		
			X5= HANKE CABLE GLAND		
			501/453/UNIV/O/M20		
			X6= 1" 150# RF DRAIN FLANGE		



*Handwritten notes in blue ink, mostly illegible.*

<p>This drawing is the exclusive property of SOR. No use whatsoever of the information contained hereon, nor reproduction in whole or in part may be made without the express written permission of SOR.</p>	PAGE 4	
	Linear - $\frac{mm}{in}$	
<p>SOR Model Number      121C-C2D-C-V1-T6-ECTTSDVVMRX8</p>		
<p>Descriptions</p> <p>X7= SPIRAL WOUND GASKETS                  X8= HI-TEMP GOLD CONTACT SWITCH</p> <p>SD= 400MM CENTERS                  EC= 3/4" NPT VENT PLUGGED</p> <p>MAX PRES: 1896 KPA @ 38C                  MAX TEMP: 204 DEG C                  RATING: 1 AMP @ 24 VDC</p>	<p>Tag Numbers</p>	<p>Specific Gravity</p>

